

18 January 2005

Only \$19.95
to keep track of your
tube and part collection

TCJ My-Stock DB



T-Rex

Dick Olsher has created a mighty 300B amplifier: the T-Rex (Transformer King, in other words, as the amplifier uses Plitron toroidal output transformers, power transformers, and chokes). [Steve Bench](#) and myself have lent a helping hand and the DIY article is available at [Enjoy the Music.com](#). The T-Rex is big, complex, and expensive. It certainly isn't your father's 300B amplifier. And few will have the resources to build the T-Rex, but then the T-Rex is not a Volks-amplifier. I see it as being much like a concept car at an auto show, something that inspires, rather than something to buy in a corner auto lot. I highly recommend that you give the article a read, as it is explanation filled, explaining how shunt regulators and partial feedback are used in the amplifier's design.

(Enjoy the Music took a big gamble in publishing this article, as the site is not a DIY site and this is not a trivial 300B, so be sure to check the article out to let them know that high-standard DIY tube projects are worth the effort.)

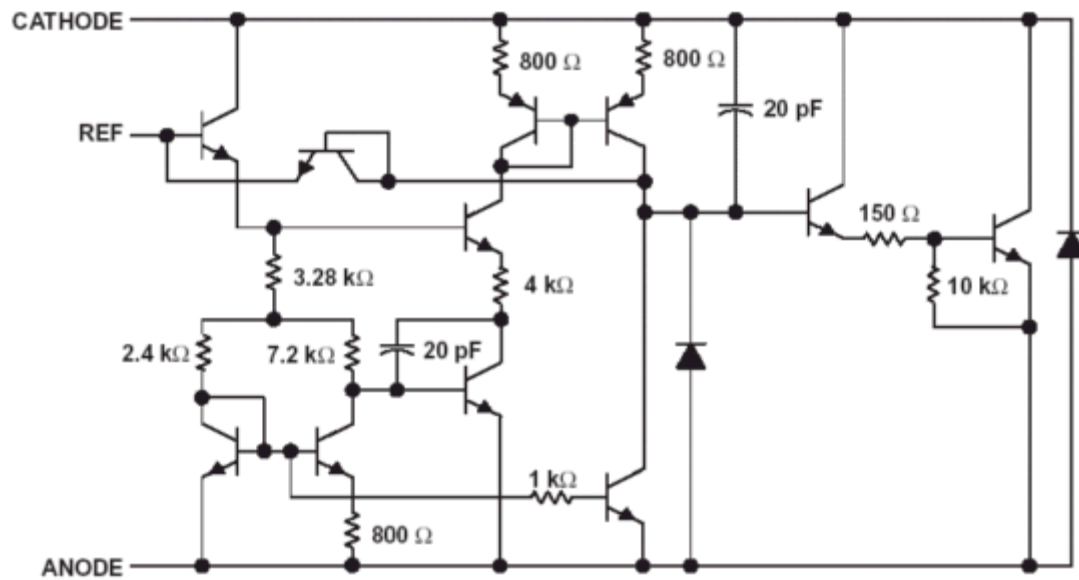
Shunt Regulators

I must get at least five e-mails a week regarding the shunt regulator. It is popular, but little understood (hence its popularity?). One reason behind its new-found acceptance is the [TL431 shunt regulator IC](#). This small three-pin IC is almost perfect in the eyes of many tube fanciers. Now, if it held only two leads it would be perfect, as I have found that tube folk like their solid-state simple, not internally simple (the TL431 holds scores of solid-state parts), but simple on the outside; and two leads are simpler than three leads; eight leaded ICs are undesirably and unthinkable complex, even if they only hold one diode. For example, if I recommend using the circuit below, many would just shake their heads in disbelief at my clumsy attempts to smuggle in solid-state devices into the pure-tube sanctuary. "As if I would ever let so many transistors get in the signal path of my RCA NOS 2A3!"

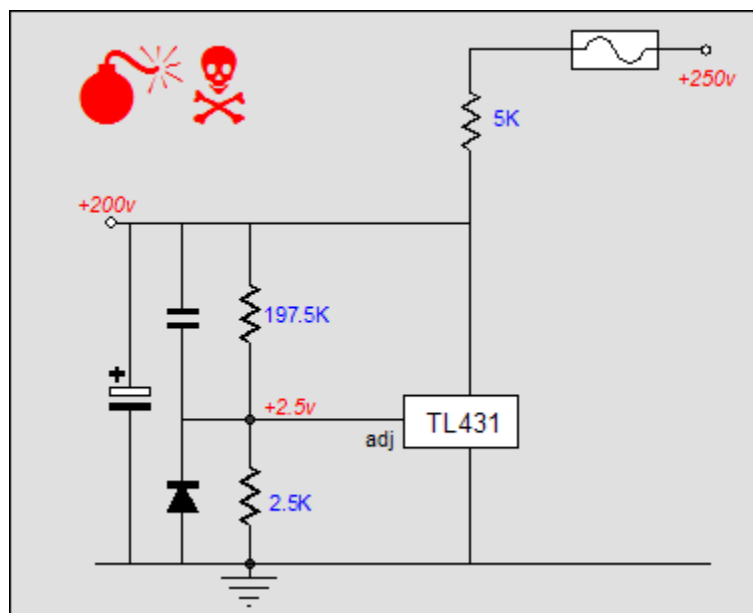
Part Type	Name	Quantity	Brand	Vendor
Tube	300B	1	RCA	Antique Electronic Supply
Tube	6X4	1	Mullard	Antique Electronic Supply
Tube	6AR5	1	Antique Electronic Supply	Antique Electronic Supply
Tube	6X4	1	Mullard	Antique Electronic Supply
Tube	6X4	1	Mullard	Antique Electronic Supply

Part Type	Name	Quantity	Brand	Vendor
Capacitor	1.5uF MKP	4	Wima	Wima
Resistor	1 ohm	25	Sheld	ESB
Tube	2A3	3	RCA	Electronic First Market
Tube	6A3	7	Amperex	Electronic First Market
Tube	6BL7	4	Sylvania	Swap Meet
Tube	6BT7	4	Sylvania	John's TV Repair
Tube	6CB5	3	Amperex	First Market
Tube	6CS7	11	Tung-Sol	John's TV Repair
Tube	6DL7	3	Deformation	First Market
Tube	6SL7	15	Sylvania	First Market
Tube	12AT7	22	National	Swap Meet
Tube	12AT7	11	Amperex	Swap Meet
Resistor	175 ohm	8	Vishay	Electronic First Market
Resistor	4000 ohm	10	Vishay	Parts Connection
Tube	6BE6	5	Tung-Sol	Swap Meet
Tube	6BD6	4	GE	Antique Electronic Supply
Tube	6BN1	3	RCA	Swap Meet
Tube	6BE6	5	Mullard	Swap Meet
Socket	PCB Socket	100	?	ESB

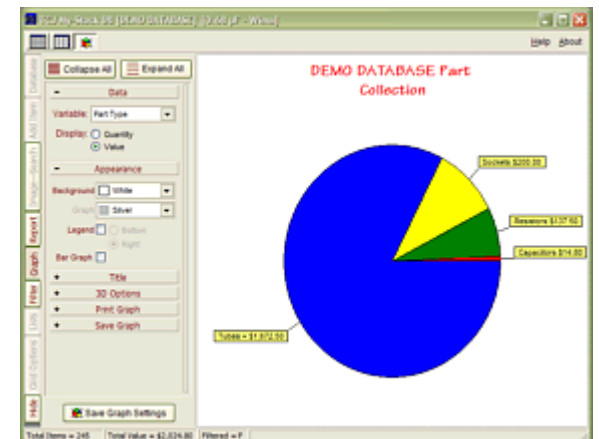
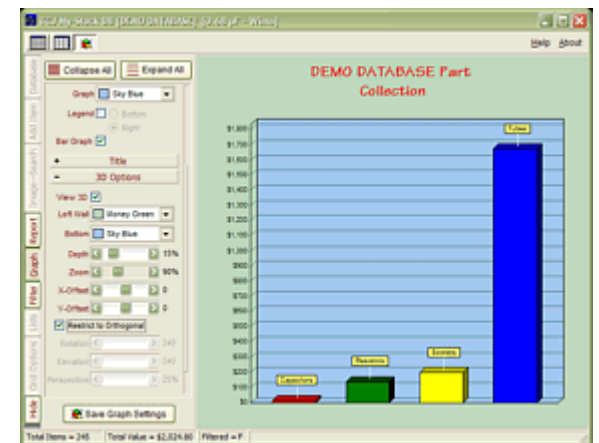
Part Type	Name	Quantity	Brand	Vendor
Capacitor	0.01 uF	4	Wima	Wima
Resistor	1 ohm	25	Sheld	ESB
Tube	2A3	3	RCA	Electronic First Market
Tube	6A3	7	Amperex	Electronic First Market
Tube	6BL7	4	Sylvania	Swap Meet
Tube	6BT7	4	Sylvania	John's TV Repair
Tube	6CB5	3	Amperex	First Market
Tube	6CS7	11	Tung-Sol	John's TV Repair
Tube	6DL7	3	Deformation	First Market
Tube	6SL7	15	Sylvania	First Market
Tube	12AT7	22	National	Swap Meet
Tube	12AT7	11	Amperex	Swap Meet
Resistor	175 ohm	8	Vishay	Electronic First Market
Resistor	4000 ohm	10	Vishay	Parts Connection
Tube	6BE6	5	Tung-Sol	Swap Meet
Tube	6BD6	4	GE	Antique Electronic Supply
Tube	6BN1	3	RCA	Swap Meet
Tube	6BE6	5	Mullard	Swap Meet
Socket	PCB Socket	100	?	ESB



The only problem is—albeit a small problem, but a problem nonetheless—the schematic above is the TL431's internal schematic. As great as the TL431 might be, many ask too much of it, either demanding it withstand too much voltage or draw too much current. The TL431 can only withstand 36 volts, so the circuit below is definitely a bad idea.



The TL431 can only source up to 100mA, so the circuit below is equally a bad idea.



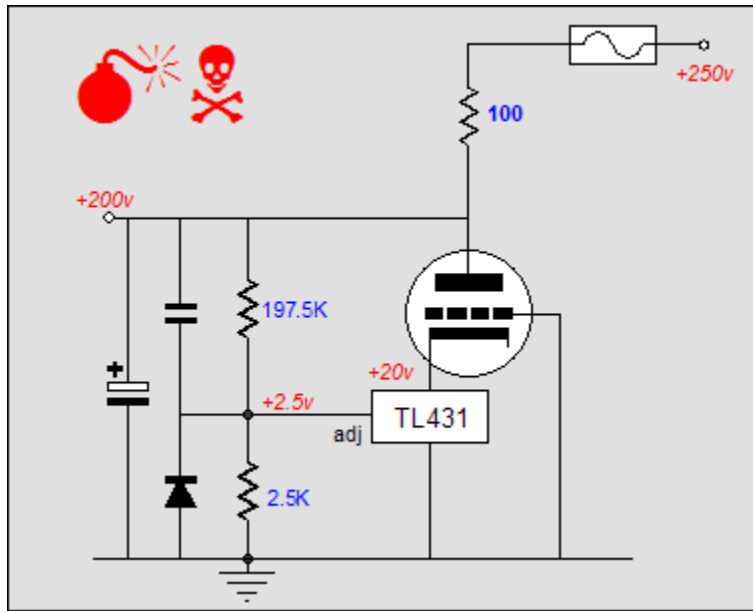
Part Type	Name	Quantity	Brand	Vendor
Tube	2A3	3	RCA	Electronic Parts
Tube	68L7	4	Sylvania	Swag Me
Tube	68L7	4	Sylvania	Jera's TV & S
Tube	68L7	11	Tung-Sol	Jera's TV & S
Tube	68L7	3	Definition	Free Mart
Tube	68L7	18	Sylvania	Free Mart
Tube	12AT7	22	National	Swag Me
Tube	5687	6	Tung-Sol	Swag Me
Tube	5687FA	4	GE	Antique Electron
Tube	5891	3	RCA	Swag Me
Tube	6L84	5	Mullard	Swag Me

TCJ My-Stock DB helps you know just what you have, what it looks like, where it is, what it will be used for, and what it's worth. TCJ My-Stock DB helps you to keep track of your heap of electronic parts. More details.

Version 2 Improvements

- List all of your parts in one DB.
- Add part Images.
- One-click web searches for information.
- Vertical and horizontal grids.*
- Create reports as PDFs.*
- Graphs added 2D/3D: pie & bar.*
- More powerful DB search.
- Help system added.
- Editable drop-down lists for location, projects, brands, styles, vendors and more.

*User definable



Download or CD ROM
Windows 95/98/Me/NT/2000/XP

For more information, please visit our
Web site :
www.glass-ware.com

To purchase , please visit our Yahoo Store:
<http://store.yahoo.com/glass-ware>

Absolute Maximum Ratings

(Operating temperature range applies unless otherwise specified.)

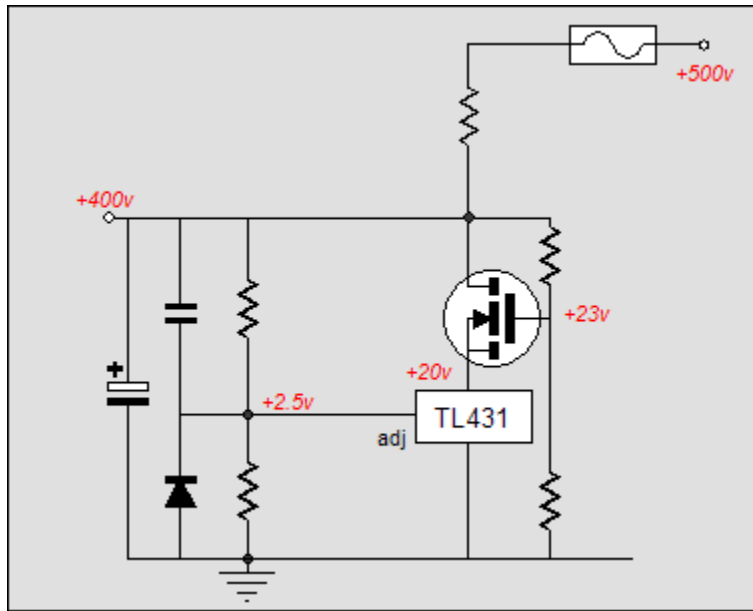
Parameter	Symbol	Value	Unit
Cathode Voltage	VKA	37	V
Cathode Current Range (Continuous)	IKA	-100 ~ +150	mA
Reference Input Current Range	IREF	-0.05 ~ +10	mA
Power Dissipation D, LP Suffix Package	PD	770	mW
P Suffix Package		1000	mW
Operating Temperature Range	TOPR	-25 ~ +85	°C
Junction Temperature	TJ	150	°C
Storage Temperature Range	TSTG	-65 ~ +150	°C

Recommended Operating Conditions

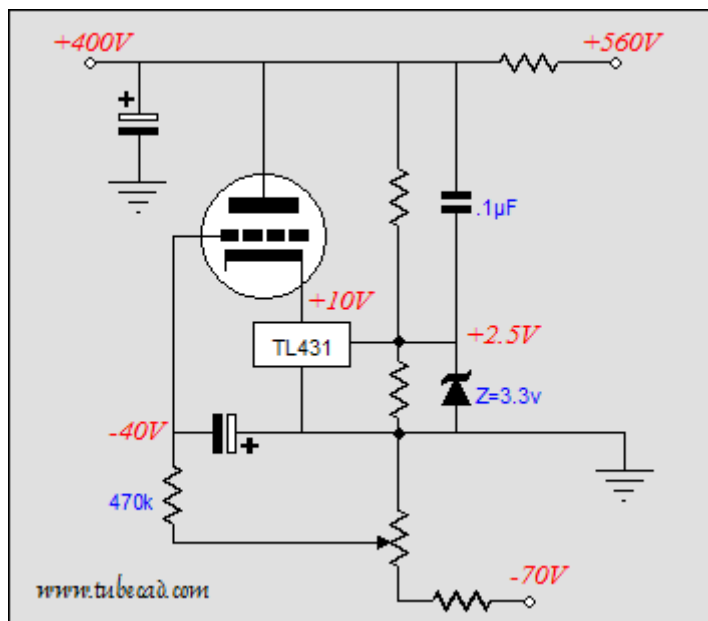
Parameter	Symbol	Min	Typ	Max	Unit
Cathode Voltage	VKA	VREF	-	36	V
Cathode Current	IKA	1.0	-	100	mA

The above table was lifted from the Fairchild TL431A PDF and it lists the limits within which the device will operate. Note, the TL431 cannot see 36 volts across its leads and draw 100mA at the same time, as that would result in 3.6 watts of dissipation, far more than the 770mW that it can withstand. (Also note that 770mW limit is at a cool 30 c and must be derated for higher temperatures.)

Extending the TL431's voltage limit is easy enough, as we can cascode the TL431 with either a tube or a transistor or a MOSFET (placing a zener in series with it is neither safe nor desirable). Above we saw a tube sitting atop the TL431; below, a high-voltage MOSFET.

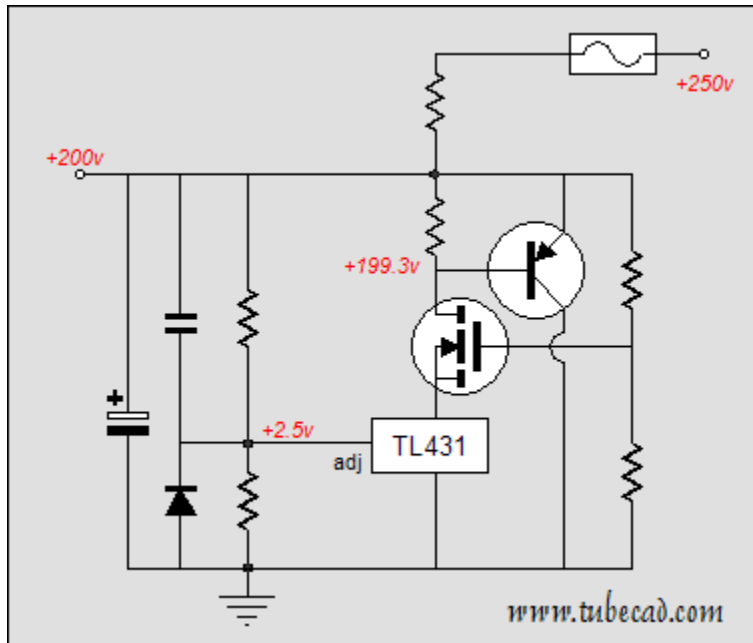


The potential problem with the tube-based hybrid shunt regulator is that at turn-on the tube's cathode is cold and not conducting, which means no voltage regulator until it is hot. Second, the triode might require a much larger negative bias voltage than the TL431's 36 volt limit. The workaround is to use a negative power supply connection to help bias the triode.

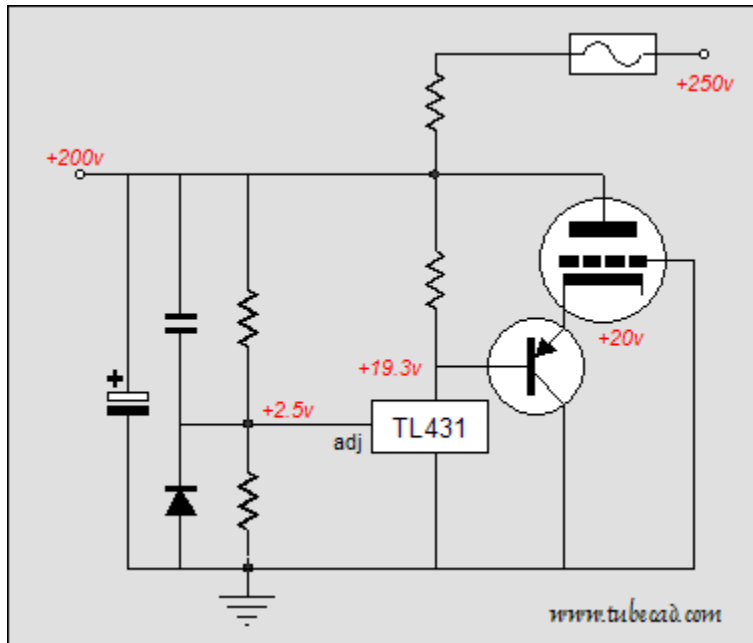


Here the triode sees a -50 volts grid-to-cathode bias voltage, while the TL431 only sees a 10 volt differential. (The optimal anode-to-cathode voltage for the TL431 would equal $(36V - 2.5V) / 2 + 2.5V$, as it would allow the greatest cathode swing on the TL431.)

Increasing the current capability of the TL431 is also easily accomplished with more parts.)



Or



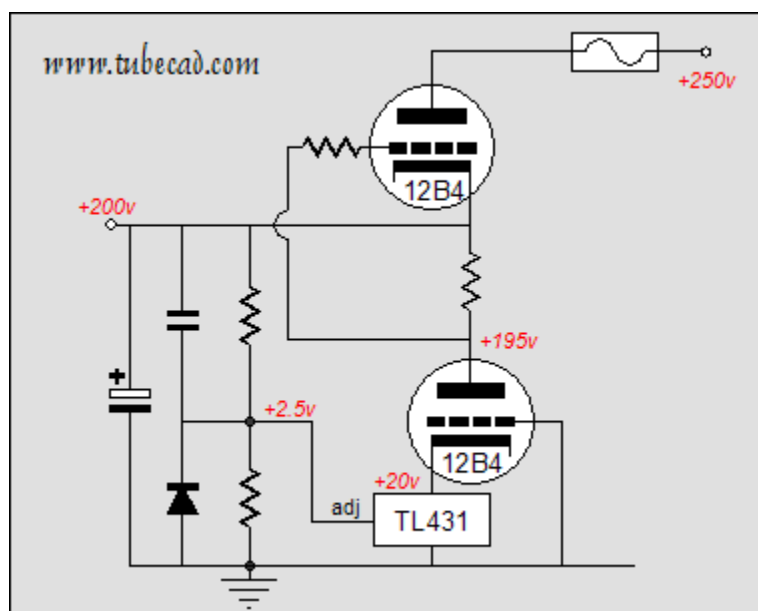
One common mistake is to ask the control element of a shunt regulator (the TL431 in this case) to draw too much current. For example, let's say you have a phono preamp that draws a total of 40mA, How much current should the TL431 draw? 90% of readers will answer 40mA, but in fact, much less is needed. Consider this: the preamp only puts 1V of output signal, which into a 100K potentiometer only equals 0.01mA of current variation.

If the load draws a fairly steady current, as single ended circuits and class-A output stages tend to do, then the shunt regulator need only make up the delta in current draw between minimum and maximum, plus whatever wall voltage fluctuations that must be compensated. In other words, 40mA is way too much current, as a total (shunt regulator and load) current draw of 60mA would probably be more than sufficient.

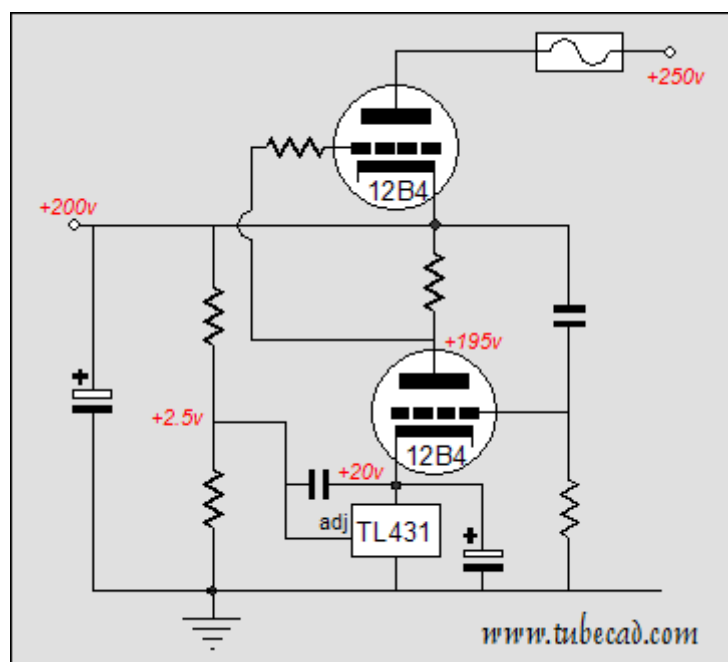
SRPP shunt regulators

Here's a circuit to ponder: an SRPP shunt regulator. The TL431 is cascaded

with a 12B4 triode, which in turn drives another 12B4. This regulator can source and sink current, as it comprises a shunt and series regulator.

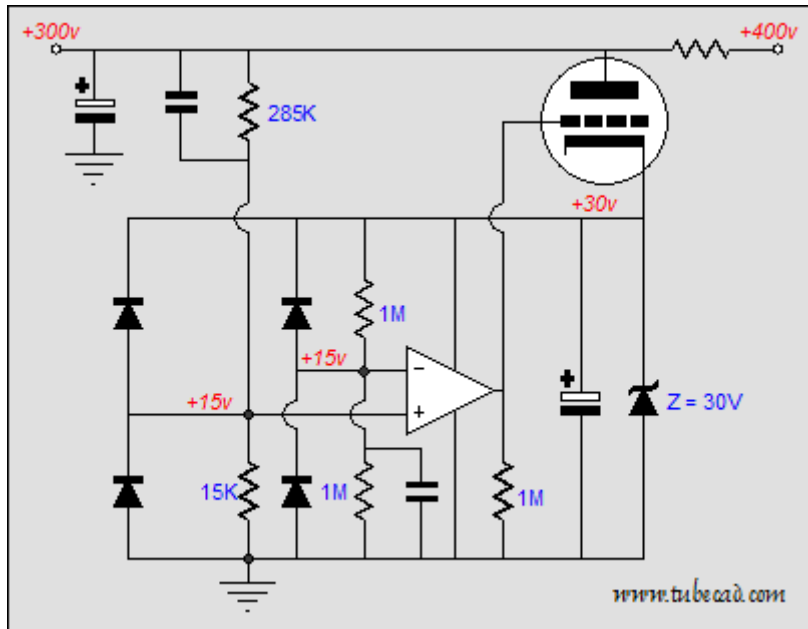


For some, the thought of letting a IC control the output of the shunt regulator is as scary as letting a IC control the sound coming out of a tube amplifier. The circuit below uses the TL431 to adjust the DC output voltage of the regulator, while the 12B4s control the AC output of the regulator.



TL431-less shunt regulator

What if all the TL431's internal functions were handled by discrete devices, devices that exhibited much higher performance? Such a circuit would look much like the one below.



//JRB

[< Back](#)

www.tubecad.com

Copyright © 1999-2005 GlassWare

All Rights Reserved

[Next >](#)