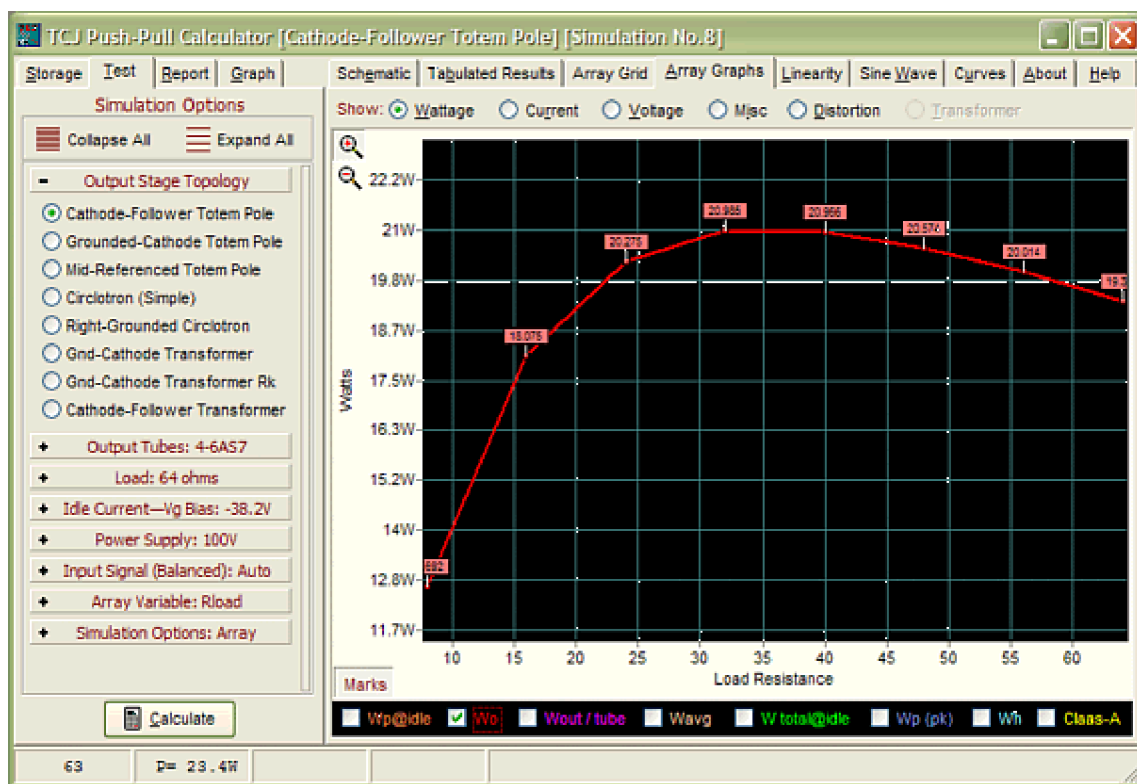


the remaining 70 volts. (This ratio can be readily altered to give the triodes more voltage, as the output voltage swing will never approach 70 volts (300W into 8 ohms, by the way). The heater power supply offers 12 volts to both the 6AS7 (two in series) and the OpAmp, which both drives the bottom MOSFET and controls the output stage's idle current. The output is capacitor coupled (the price we pay for having a mono-polar power supply; a good deal actually). The load is specified as 32 ohms (21W), but an 8-ohm load (12W) can be driven at a lower output power level.

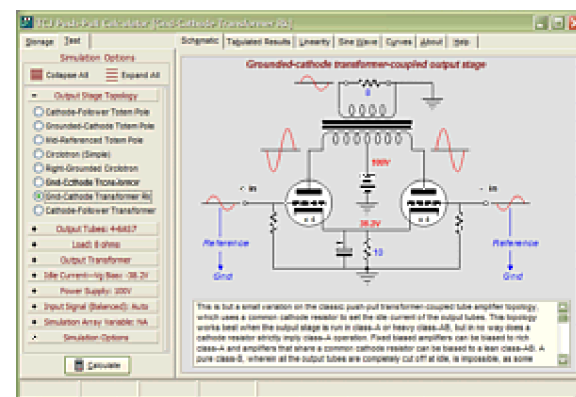
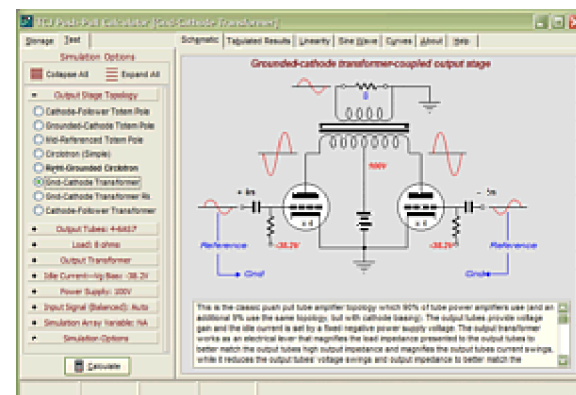
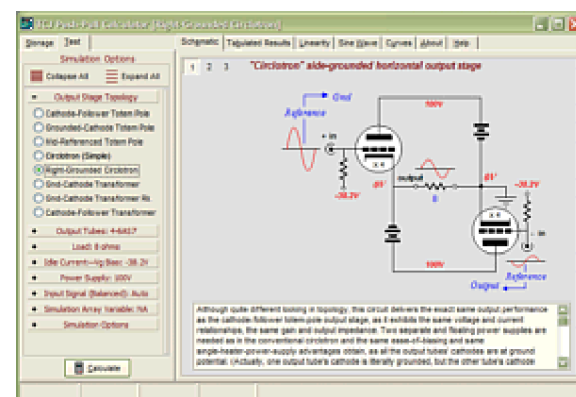
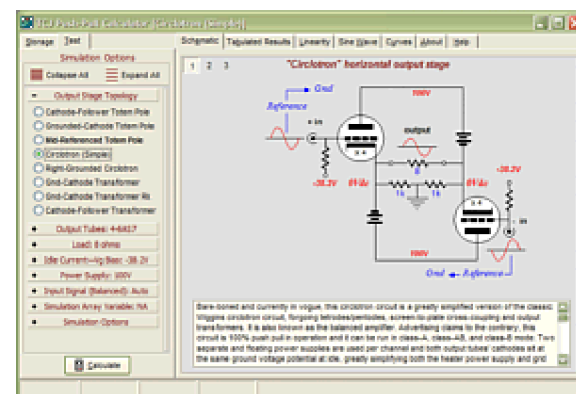


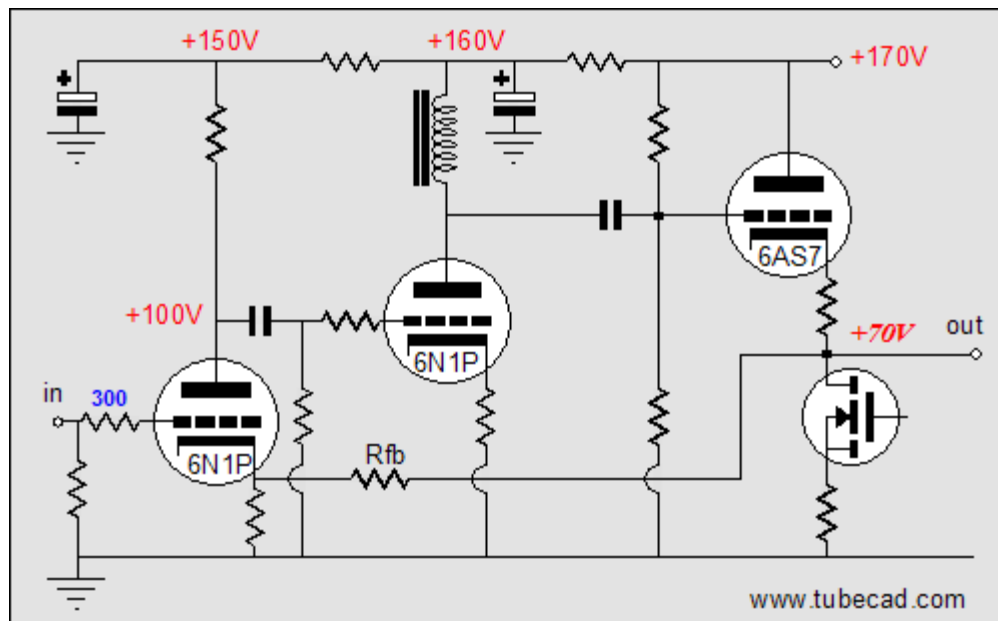
Click on image to see enlargement. Click here to [download report](#).

This mixed-tech output stage needs a carefully designed input and driver stage. Because the 6AS7s require so much drive voltage to deliver their maximum current swing, a solid-state front-end isn't our first choice, although one could be designed. The front-end must hold a gain of at least 80, just to drive the output tubes, assuming a 1-volt input signal; and if a feedback loop is used, a gain higher than 80 will be needed. In other words, one triode is not likely to work, but one pentode might (or two triodes cascaded). However, two triode-based grounded-cathode amplifiers cascaded would give us the most options, considering the low B+ voltage. For example, 6DJ8 type tube could easily deliver a final gain of 400 in such a circuit.

6DJ8????

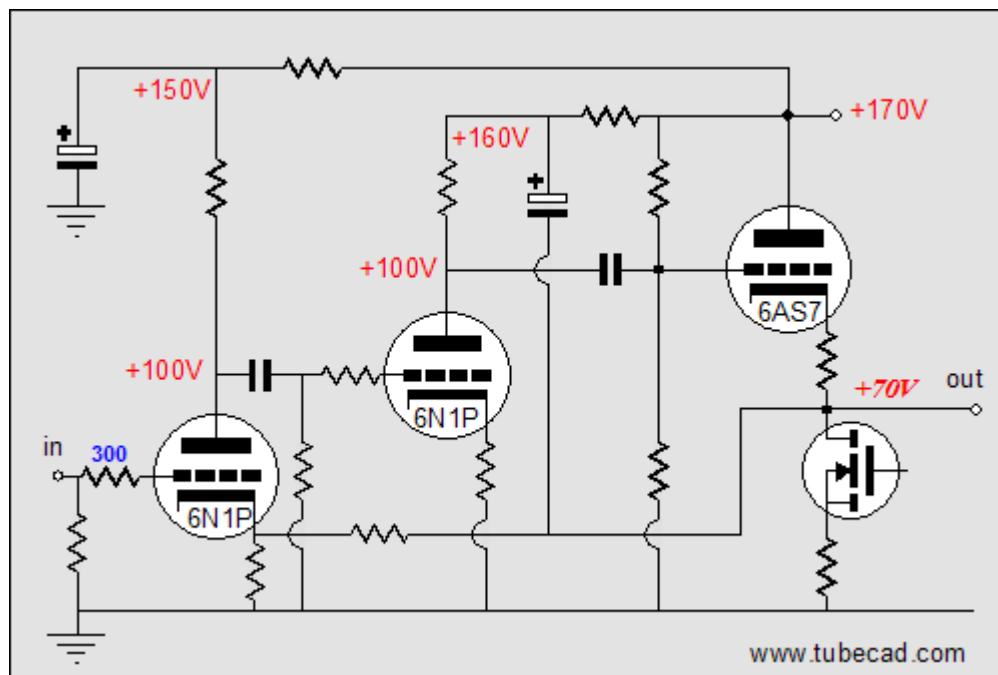
I often get grief over using 6DJ8s in the circuit examples I draw. For many there are only trees and no forest; just parts, no topology. A circuit that uses a 6DJ8 can only use a 6DJ8, never a 6AQ8 or 6BQ7. The more fanatical will claim that a circuit that uses a "Bugle Boy" 6DJ8 can never use an RCA 6DJ8. The human mind is a fascinating thing to behold. "Why do you always use 6DJ8s? Everyone knows that—fill in your favorite tube—are the only good small-signal triodes."





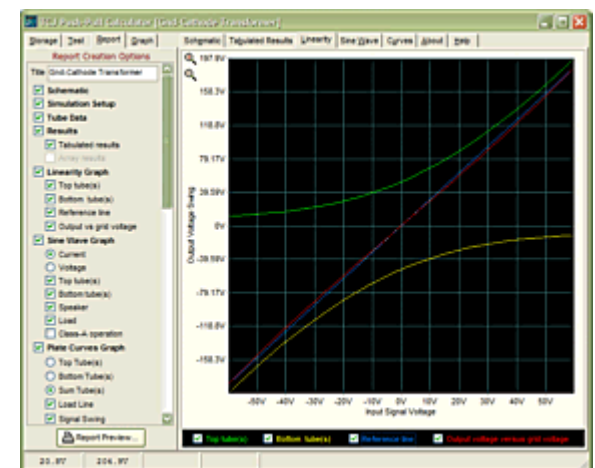
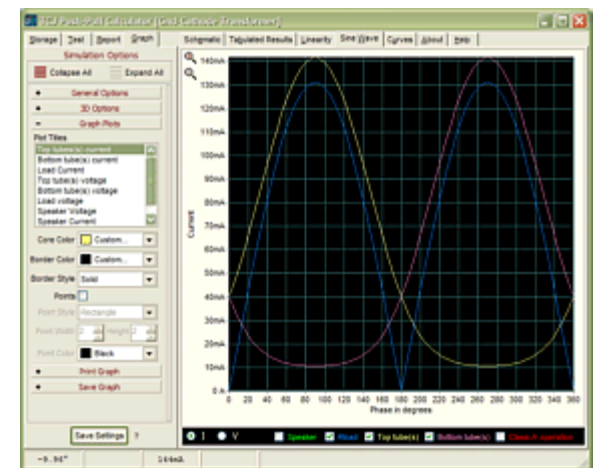
One workaround would be to replace the plate resistor with an inductor, which would effectively double the B+ voltage. Such a replacement would give the 6N1P plenty of voltage to work with, as almost the full 160 volts would be available. However, such a move is dangerous when a global feedback loop is added to the mix, as the inductor brings its own set of problems, such as resonance and phase shifts, which can easily turn an amplifier into an oscillator.

Thus, in this circuit, with this limited B+ voltage, it should be obvious that the 6DJ8 is a better choice, but let us see if we cannot make the 6N1P work through a special technique.



Bootstrapping

The circuit above may not look that different from the first version, as it holds the same number of parts, but it is wired differently. The driver stage's plate resistor is



TCJ PPC Version 2 Improvements

- Rebuilt simulation engine
- Create reports as PDFs*
- More Graphs 2D/3D*
- Help system added
- Target idle current feature
- Redesigned array creation
- Transformer primary & secondary
- RDC inclusion
- Save user-defined transformer definitions
- Enhanced result display
- Added array result grid

*User definable

TCJ Push-Pull Calculator has but a single purpose: to evaluate tube-based output stages by simulating eight topologies' (five OTL and three transformer-coupled) actual performance with a specified tube, power supply and bias voltage, and load impedance. The accuracy of the simulation depends on the accuracy of the tube models used and the tube math model is the same True Curves™ model used in

bootstrapped to the output stage's output, which effectively boosts the B+ voltage by the amount of peak output swing, which in this case is about 36 volts. So effectively, the B+ available to the driver stage is not 160 volts, but 196 volts, at the top of the grid swing. This means that we can set the idle plate voltage 36 volts higher than with a fixed 160-volt B+ voltage. In other words, we can use $196 - 74$ volts, which equals 122 volts; instead, of $160 - 74$ volts, which equals 86 volts. The result is that the lowest plate voltage swing will only extend down to 48 volts, not 12 volts. So, how well will the 6N1P work with this setup?

GlassWare's SE Amp CAD and Live Curves programs, which is far more accurate than the usual SPICE tube model.

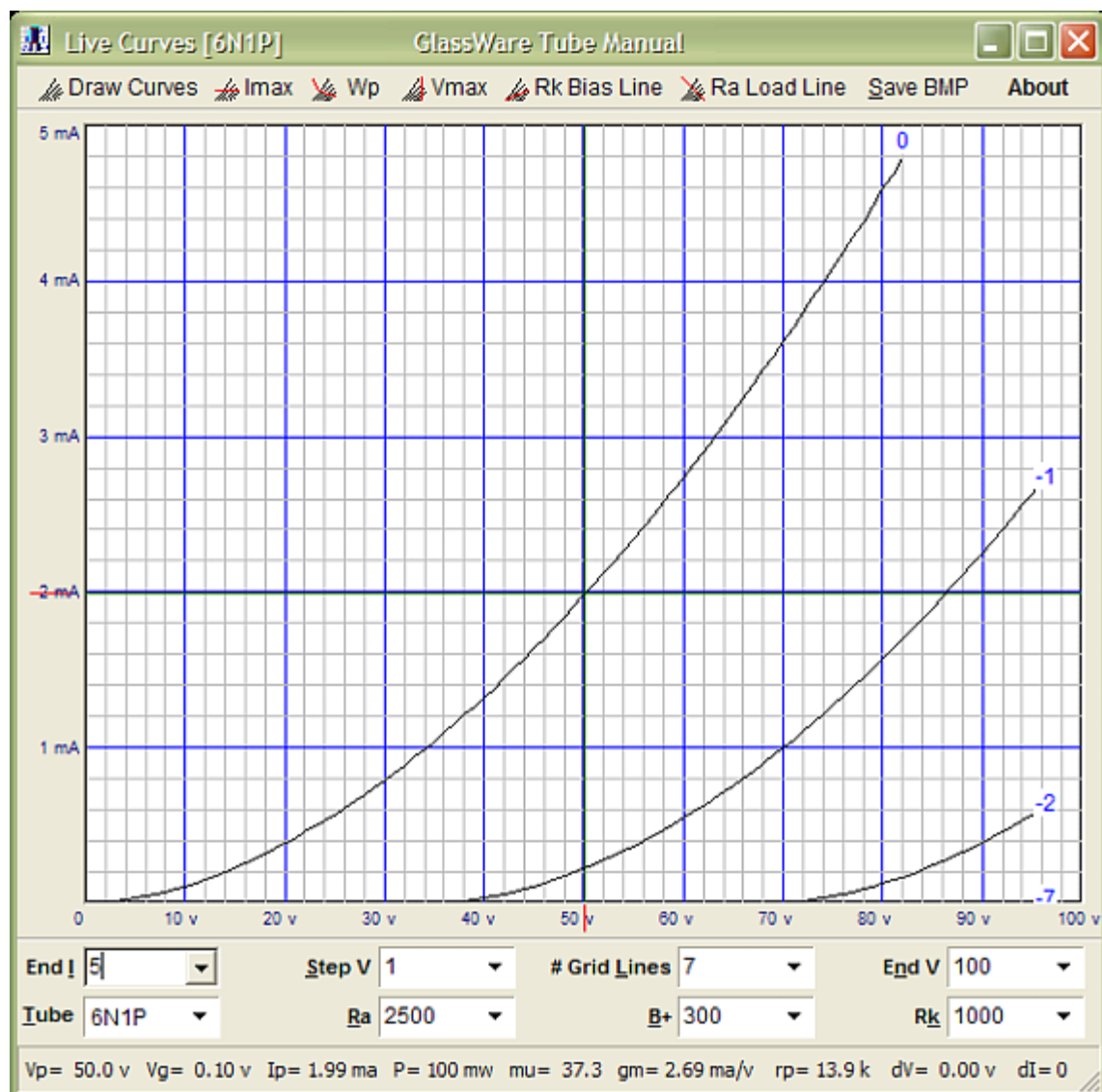
Download or CD ROM
Windows 95/98/Me/NT/2000/XP

For more information, please visit our Web site :

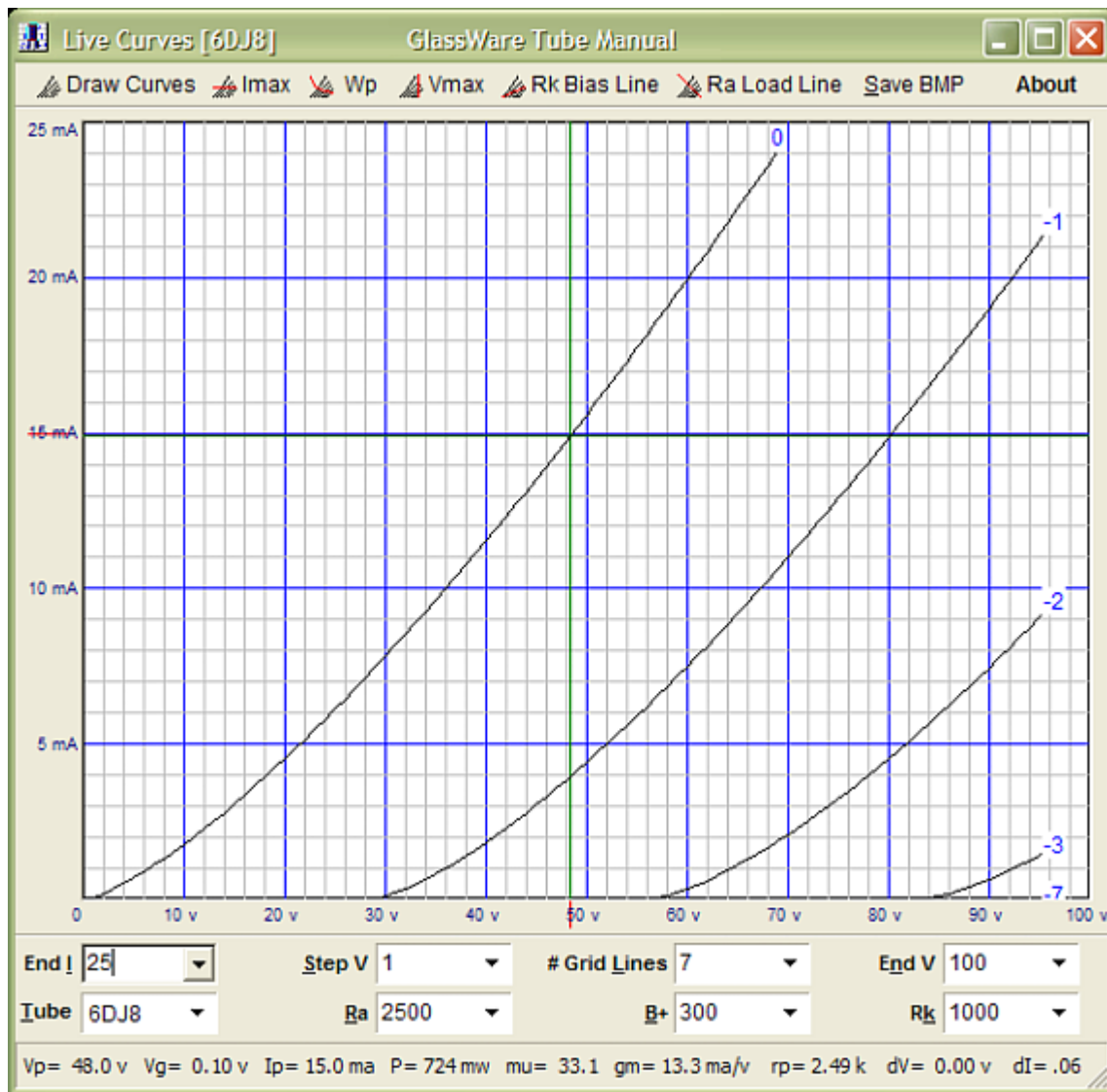
www.glass-ware.com

To purchase, please visit our Yahoo Store:

<http://store.yahoo.com/glass-ware>



With a 37k plate resistor and an idle current of 1mA, the 6N1P would work, but this is still a trivial amount of current. Now, let's see how well the 6DJ8 works.



Back to the 6DJ8

The 6DJ8 draws 15mA at 48 volts with 0-grid volts. 148 volts divided by 0.015A equals roughly 10k, which means an idle current of 7.5mA would allow a symmetrical swing of 74 volts on the plate. Much better. Now, we add frosting to the cake.

The 6AS7 is not linear a tube. —I have been told that some believe that it is a close relative to the 2A3. How so? Well, it looks like a 2A3 and the same company that created the 2A3 created the 6AS7. Sure, just as George Bush is a close relative to John Kerry, as both are white men that went to Yale. I would love to know who started this nonsense. The 2A3 is nothing like a 6AS7, as they differ in every key electrical characteristic and even in fundamental construction, as one holds a directly heated cathode and the other indirectly heated cathode.— And its nonlinearity shows with a brutal 128-ohm load-line (32 times 4, as there is four triodes working into a 32-ohm load). In other words, it only takes 38 volts (from grid to cathode) to completely turn on the 6AS7, but it would take closer to 50 volts to turn it off. A feedback loop will work to create this asymmetrical drive signal in the process of straightening out the 6AS7.

A 6N1P is definitely not a drop in replacement for

Using a 6DJ8 with a plate resistor of 16k and an idle current of 5mA allows us to lower the plate voltage at idle to 116 volts, which will allow the 6DJ8's plate to swing +80 volts and -96 volts relative to ground and +54 volts and -60 volts relative to the output, because of the bootstrapping.

the 6DJ8

Therefore, in this circuit, a 6N1P is definitely not a drop in replacement for the 6DJ8. Of course, if we use a higher B+ voltage for the input and driver stage, then a 6N1P could be profitably used.

//JRB

[< Back](#)

www.tubecad.com

Copyright © 1999-2005 GlassWare

All Rights Reserved

[Next >](#)