

03 August 2005



### Aikido PCB update

The Aikido circuit has provoked enough interest to force itself off the computer screen and be born in many home-built line amplifiers and the compliments keep rolling in (yesterday, for example, I received an e-mail that described the circuit as "a masterpiece"). It has also generated several long threads at [DIYaudio.com](http://DIYaudio.com) and some commercial interest. In the previous blog, I stated that if there were enough potential takers, I could provide PCBs to make the circuit easier to build. Well...

...Mission control, all systems are go.

Enough readers—in fact, many more than I expected—e-mailed me to express their desire for PCBs for the Aikido amplifier that I have no fear in placing a large order. As for the PCB layout and choice of tube type, exactly half of you want octals and the other half want 9-pins (in fact, one reader wants loctals). Oddly enough, no one ever asks for 7-pin compatibility, although there are several cool 7-pin, single triode tubes that could work well.

The solution I have come up with is to make a PCB that can work with any set of tubes, octals, 9-pin, 7-pin... Thus, if you grow tired of the 6SN7 sound, you can try 5687s or even 12B4s instead—without ditching the PCB. This is made possible by separating the tubes from the PCB by giving the tubes their own formed-metal, socket-holding assembly (or a box chassis that holds four tube sockets on top could be used). I love the flexibility and see several other uses for the tube-socket assembly; a four-tube phono preamp, for example.

I should mention that the *Tube CAD Journal* isn't the only place to buy a PCB for the Aikido amplifier, as a fellow at [diyaudio.com](http://diyaudio.com) has laid out a PCB and he is looking for customers. His board looks professional, if a bit too tight (I like more room between the tubes and more room for a wider coupling capacitor selection). Additionally, Brian Cherry of [diyhfisupply.com](http://diyhfisupply.com) tells me that he plans on coming out with a complete kit based on the Aikido circuit.

**Support the Tube CAD Journal**

Only \$19.95  
to keep track of your  
tube and part collection

## TCJ My-Stock DB



As for my PCB design, I have added a cool feature (no, it's not the sonic width control) to the PCB that should make the Aikido amplifier your music collection's best friend. Details to come.

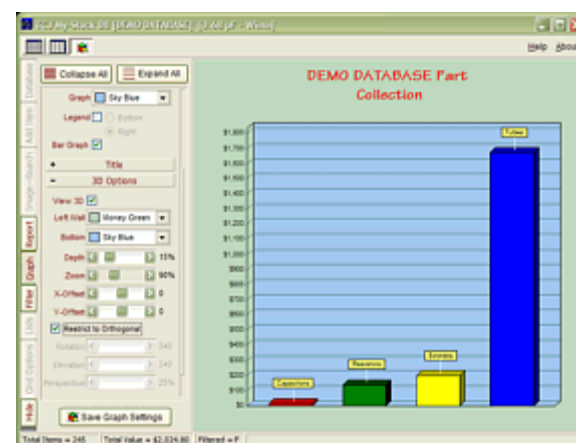
Furthermore, I have also laid out a stepped attenuator (36 position) and an input-selector PCB that can optionally be bought. In fact, I plan on offering a nice-looking chassis (and set of knobs) to house all the parts except the power supply, which will have its own enclosure and PCB. (A circuit this good deserves an equally good-looking enclosure.)

When, when, when? I am planning on doing a completely thorough review on the Aikido-amplifier PCB before sending it into the PCB house.

Type	Name	Brand	Order	Style	Vendor	Project	Quantity	Unit Price	Total Price	Status	Location
Tube	5687A	5687A	1	6L8A	Antique Electronic Supply	Line Amplifier	4	\$4.50	\$18.00	Keep	Box 3

Type	Name	Brand	Order	Style	Vendor	Project	Quantity	Unit Price	Total Price	Status	Location
Tube	5687A	5687A	1	6L8A	Antique Electronic Supply	Line Amplifier	4	\$4.50	\$18.00	Keep	Box 3

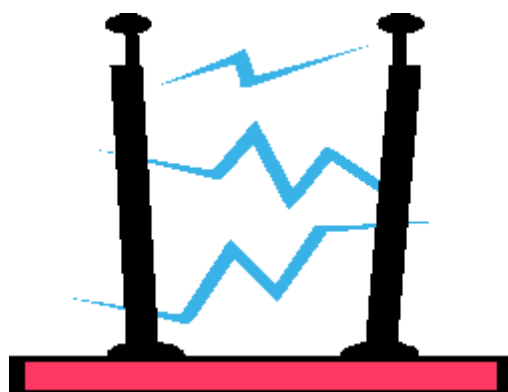
Part Type	Name	Quantity	Brand	Vendor
Capacitor	1.5uF 50V	4	Wima	Ebay



## Cathode follower output stage design

### Paying up front

Let's say that we are willing to fight a fair fight and try to give the cathode follower output stage just what it needs: a larger driver B+ voltage than the output stage's B+ voltage. How do we proceed?



[A note on high-voltage in general: I hate it. I wish vacuum tubes only needed a few cathode-to-plate volts to pass a few amperes of current. Unfortunately, hundreds of volts are needed to pass just a few hundred milliamps of current. So, the idea of adding more B+ voltage to amplifier is a scary prospect, as the danger increases with the square of the voltage difference, for example, twice the voltage, four times the wallop. Thus a few rules should always be followed when dealing with high-voltage:

Never work alone—if you get shocked and pass out or your heart stops beating, someone has to call for help.

Never use both hands on the same piece of live equipment at the same time. The two paths that you never want high-voltage to take is through your heart or head. Unfortunately, your heart resides between both your hands.

Don't assume that unplugged equipment is safe to touch with bare hands. High-quality capacitors can hold a charge for up to several months. Even a charged capacitor that has been just shorted out is not necessarily safe to handle a few

minutes later, as [dielectric absorption](#) (DA) can reestablish a charge in a capacitor that was recently shorted. (In fact, in the old day, large-valued oil capacitors shipped with their leads shorted out by a piece of wire.) In other words, never assume; always test for voltage.

I used to take comfort in sitting on a bamboo chair that rest upon a rubber mat with one arm behind my back. Today, I would add eye protection and maybe some test leads tapped to chopsticks.]

Just as with any other power amplifier, we start at the end. First we specify a load impedance, output tube type, B+ voltage, and idle current and then we determine what IV relationships the amplifier must undergo and then we resolve what input signal the cathode follower's grid needs to see to realize those dynamic voltage and current swings. Of course, for many this task would only slightly less daunting than designing a radar system; for these readers, the answer is to cheat and look at someone's else's homework: tube manuals often list a design example for the power tubes. For example, the RCA RC-20 tube manual describes a 2A3-based, class-A amplifier (i.e. a single ended amplifier) that works into a load impedance of 2,500 ohms and 250V plate voltage and a negative bias voltage of -45V, which yields an idle current of 60mA and 3.5W output.

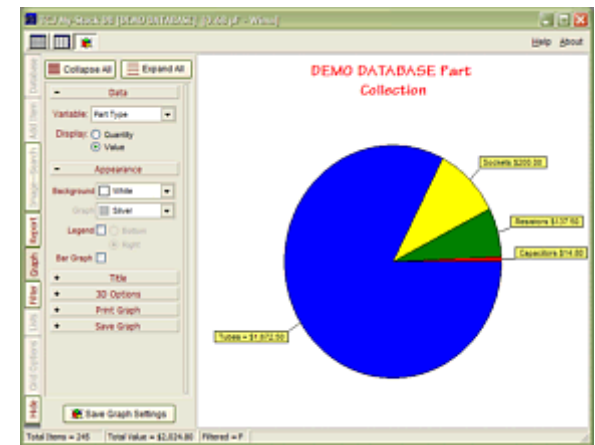
#### 2A3 Class A Amplifier

PLATE VOLTAGE	250 Volts
GRID VOLTAGE 1	-45 Volts
PLATE CURRENT	60 mA
PLATE RESISTANCE (rp)	800 Ohms
AMPLIFICATION FACTOR ( $\mu$ )	4.2
TRANSCONDUCTANCE (Gm)	5250 $\mu$ S
LOAD RESISTANCE	2500 Ohms
UNDISTORTED POWER OUTPUT	3.5 Watts

We can backward engineer this data into the required IV relationships. For example, 60mA against 2,500 ohms equals 150V, which means that plate will have to swing down to 100 volts at full conduction (250V - 150V) and up to 400 volts at cutoff (250V + 150V), a peak-to-peak plate swing of 300V. The require plate swing becomes the required cathode swing in a cathode-follower, single-ended amplifier. Thus, if the cathode must swing +/-150 volts, the grid needs to see +/-195 volts of swing, which means that the driver stage's B+ must sport at least a +500V rail voltage in the form of a mono-polarity power supply or +/-250V in a bipolar power supply to fit such large voltage swings (the driver stage triode must displace some voltage as it conducts fully).

#### Creating extra B+ voltage

How do get the extra B+ voltage or the added negative power supply rail? Quite easily, if a conventional, center-tapped, tube-amplifier power-supply transformer is used. Most old tube amplifiers use a center-tapped, full-wave power supply topology. The reason is simple: it uses only two rectifiers, which are usually packaged in one tube envelope, such as the 5AR4 or 5U4. if the full-wave bridge topology had been used instead, four rectifiers would be needed and two extra rectifier heater windings would be needed, as the bottom two rectifiers share a common plate connection, not a cathode connection. In other words, it was cheaper to use the power transformer in a less efficient fashion with two rectifiers, rather than use four rectifiers with a non-center-tapped power supply transformer. Today, we have access to high-voltage solid-state rectifiers that do not require any



Part Type	Name	Quantity	Brand	Vendor
Tube	2A3	3	RCA	Electronic Peak
Tube	6SL7	4	Sylvania	Swag the
Tube	68L7	4	Sylvania	John's TV Ra
Tube	6SL7	11	Tung-Sol	John's TV Ra
Tube	6SL7	3	Defcontron	Flex Start
Tube	6SL7	16	Sylvania	Flex Start
Tube	12AT7	22	National	Swag the
Tube	5887	5	Tung-Sol	Swag the
Tube	5887A	4	GE	Antique Electron
Tube	5881	3	RCA	Swag the
Tube	6L34	5	Muller	Swag the

TCJ My-Stock DB helps you know just what you have, what it looks like, where it is, what it will be used for, and what it's worth. TCJ My-Stock DB helps you to keep track of your heap of electronic parts. More details.

#### Version 2 Improvements

- List all of your parts in one DB.
- Add part Images.
- One-click web searches for part information.
- Vertical and horizontal grids.\*
- Create reports as PDFs.\*
- Graphs added 2D/3D: pie & bar.\*
- More powerful DB search.
- Help system added.
- Editable drop-down lists for location, projects, brands, styles, vendors and more.

\*User definable

**Download or CD ROM  
Windows 95/98/Me/NT/2000/XP**

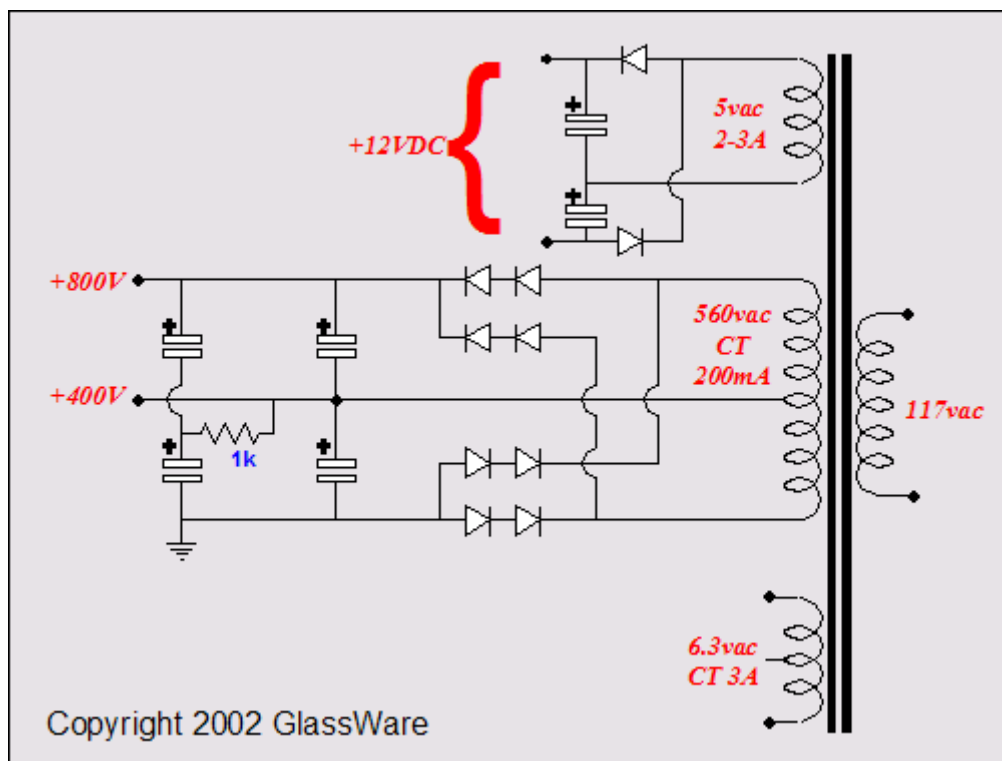
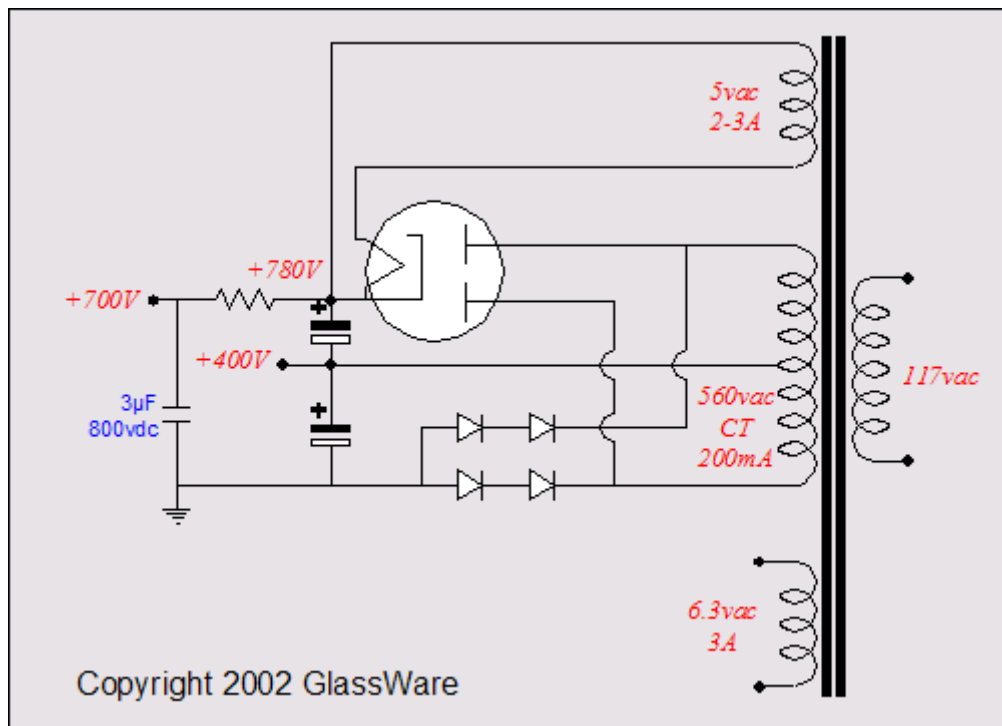
For more information, please visit:

[www.glass-ware.com](http://www.glass-ware.com)

To purchase , please visit our Yahoo Store:

additional power transformer windings to heat the rectifiers.

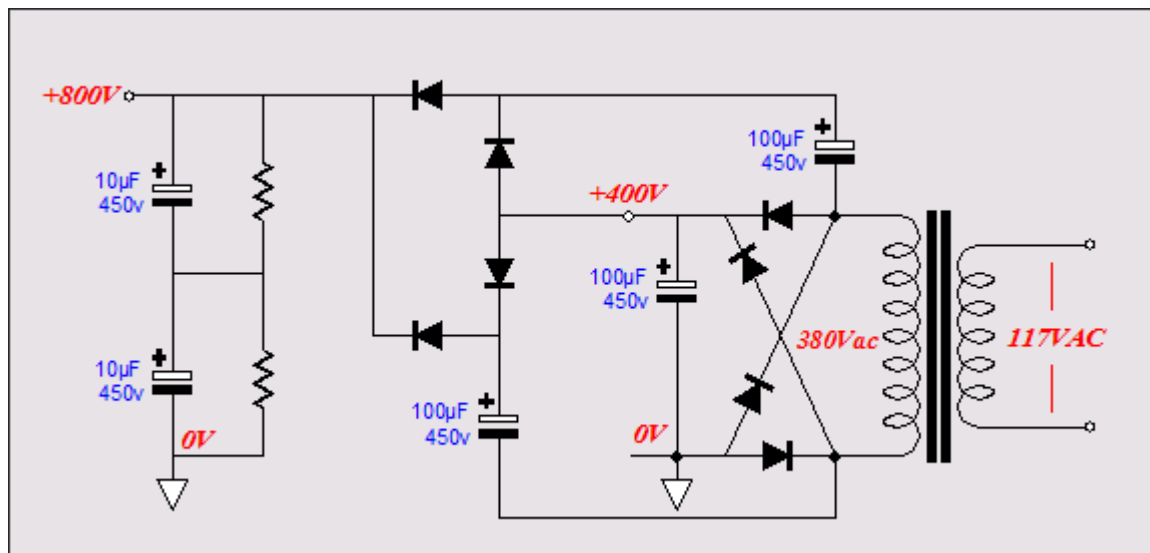
<http://store.yahoo.com/glass-ware>



In the schematics above, we see both tube and solid-state rectifiers used to create two B+ voltages (or a positive and negative power supply voltages). The mono-polar and bipolar topologies differ only in where we place ground. When ground is attached at the transformer center tap, we have created a bipolar power supply; attached at the most negative point, a two B+ voltage power supply.

If the power transformer doesn't hold a center tap, then the circuit below can be

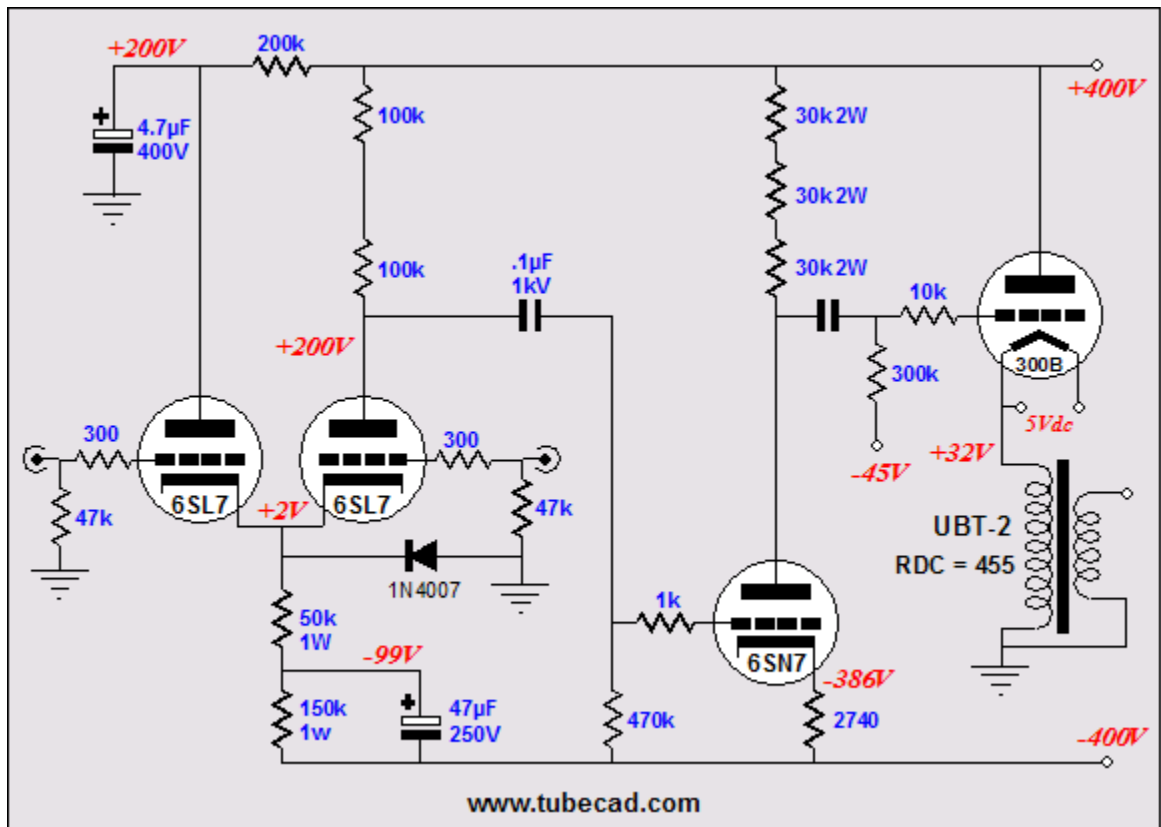
used. It requires an additional four rectifiers and two extra capacitors.



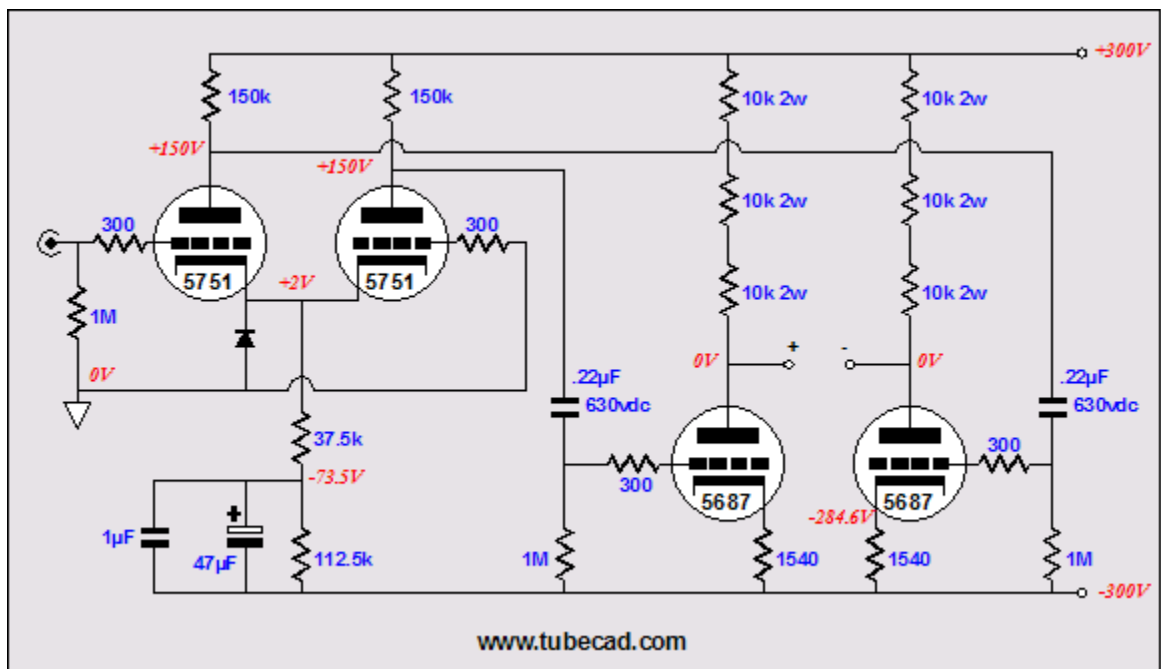
Returning to the RCA tube manual's design example, the plate voltage was specified at 250V, not the B+ voltage, as all output transformer primaries hold a DCR that will displace some of the B+ voltage; and cathode biasing would also steal 45V from the B+. Thus, a B+ voltage of 300V might be needed to yield 250 across the 2A3. This means that the two-voltage power supply would hold a +300V and +600V tap; the first for the output stage and the second for the driver stage. Alternatively, we could use a bipolar power supply of +/-300 volts.

### Bipolar power supply front ends

The advantage of the bipolar power supply lies in its intrinsically holding its own negative bias power supply in the form of its negative rail. The disadvantage lies in its requiring an addition heater winding for the driver tube, as its cathode sits at (or near) the negative rail voltage; a common power supply for the input and driver tube heaters would exceed the maximum cathode-to-heater voltage. Shown below, we see a 300B-based, single-ended, bipolar-power supply amplifier.



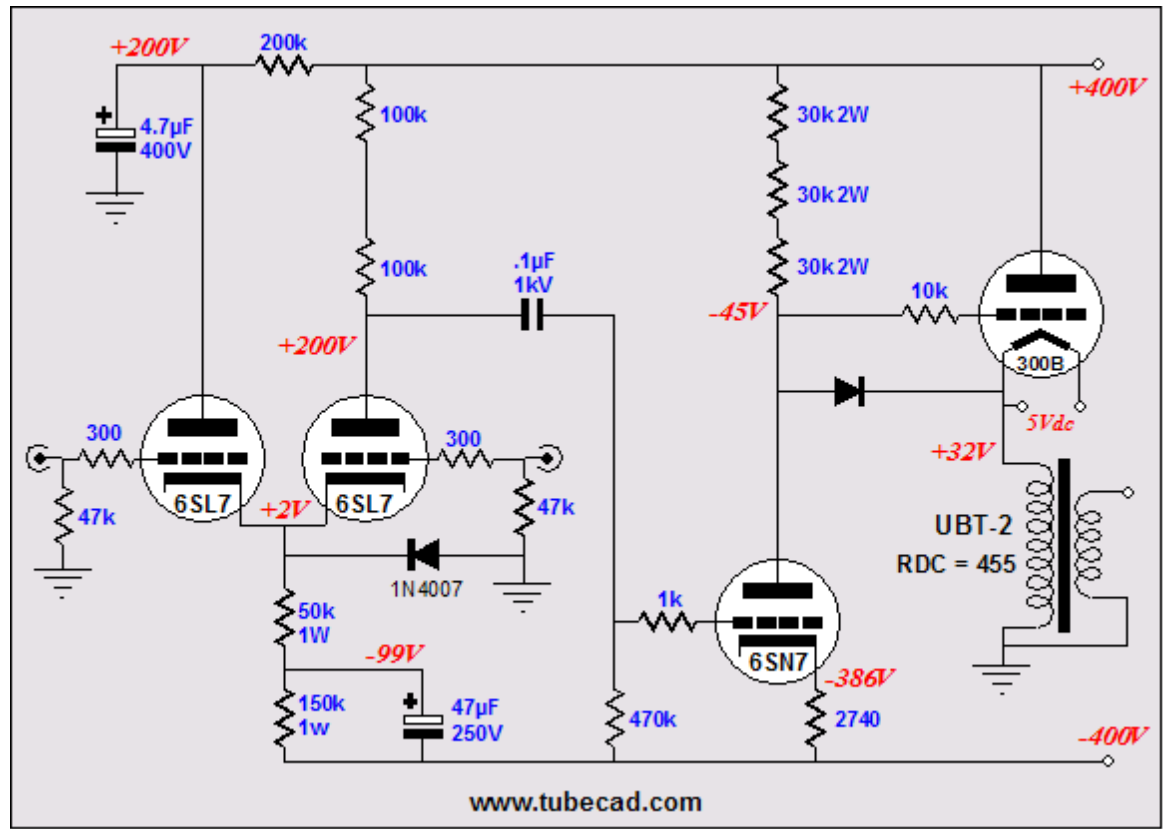
Shown below, we see an input stage and driver stage for a bipolar-power supply, push-pull amplifier. (This circuit could be used to drive electrostatic headphones, which would make for an interesting dual use amplifier.)



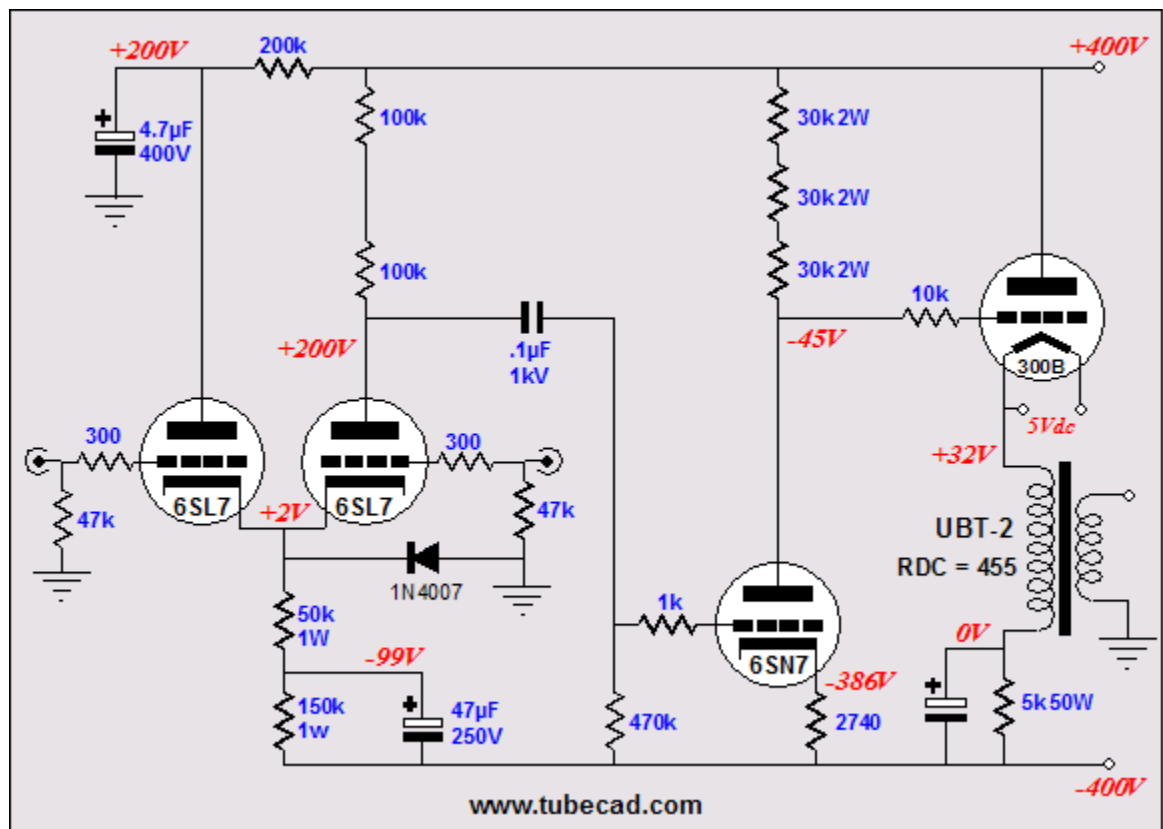
I know that many are thinking that the bipolar power supply would allow DC coupling of the driver stage to the output tube's grid.

Bad idea!

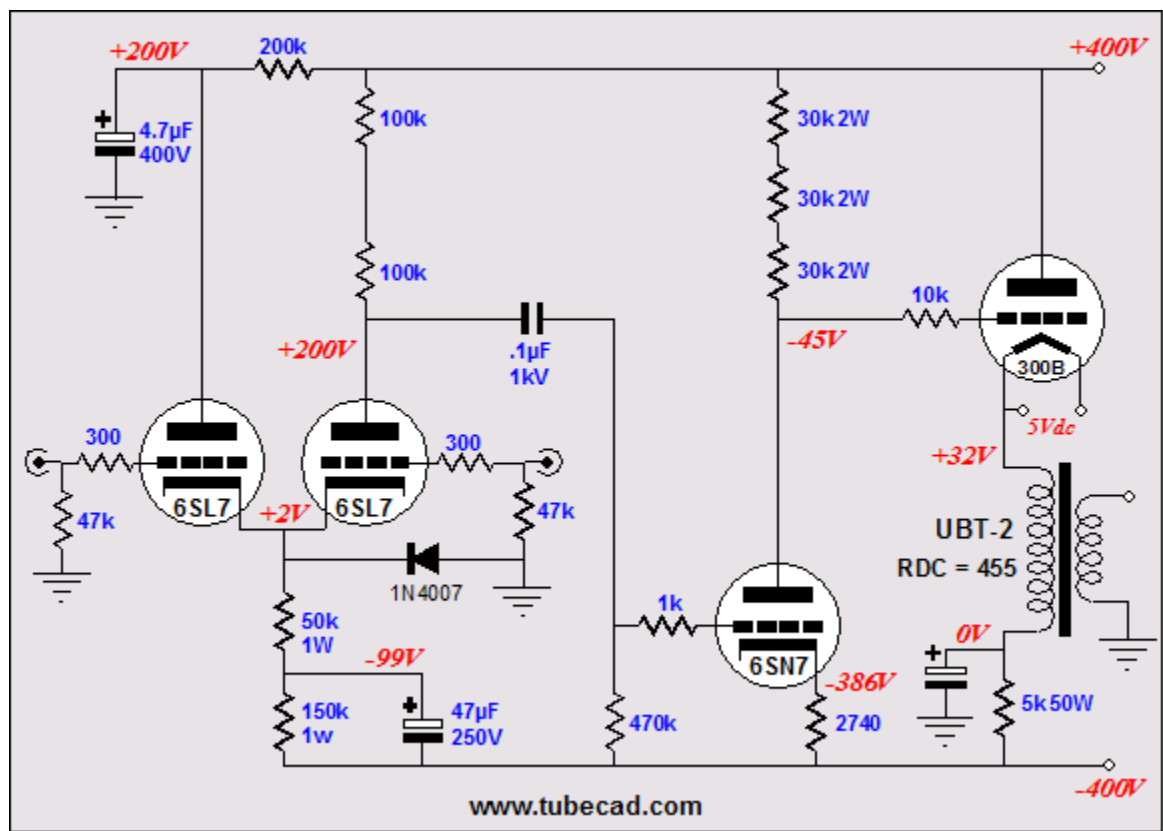
What happens if the driver tube fails or is pulled from its socket (or even just jiggled in its socket)? I don't know how much current a 2A3 would conduct with +300V on its grid—probably, something close to 1.5A, the result of multiplying its gm against 300V. Furthermore, tubes age and can drift an amazing amount in just a few minutes. How would you adjust the idle current in such an amplifier? One possible workaround is shown below.



The amplifier below uses a hugely-valued cathode resistor that terminates into the negative rail, not ground. This large cathode resistor will protect the output tube by greatly limiting its maximum current conduction ( $I_{max} = V/R_k$ , which in this example is about 150mA DC).



Do not fail to note the 50W cathode resistor. This topology wastes a huge amount of heat just to do away with one coupling capacitor. But was it really eliminated? It seems to me that the electrolytic capacitor is much worse than any coupling capacitor.





Why not use a low-voltage capacitor to shunt the output transformer to “ground,” having capacitor terminate into ground instead of the negative rail? Two problems: what happens when the output tube is missing from action or when driver tube is missing? In the first case, the capacitor becomes reversed biased, which will destroy an electrolytic capacitor, as less than 1 volt of reverse polarity is enough to permanently damage such a capacitor. In the second case, the capacitor will charge up to something close to the B+ voltage, which means that a low-voltage capacitor cannot be used after all.

### **Next time**

I have gone beyond my finger's limits once again (I am amazed at how how time is required to put a blog entry). Next time, expect to see many more cathode-follower output stage topologies.

//JRB

[< Back](#)

www.tubecad.com

Copyright © 1999-2005 GlassWare

All Rights Reserved

[Next >](#)