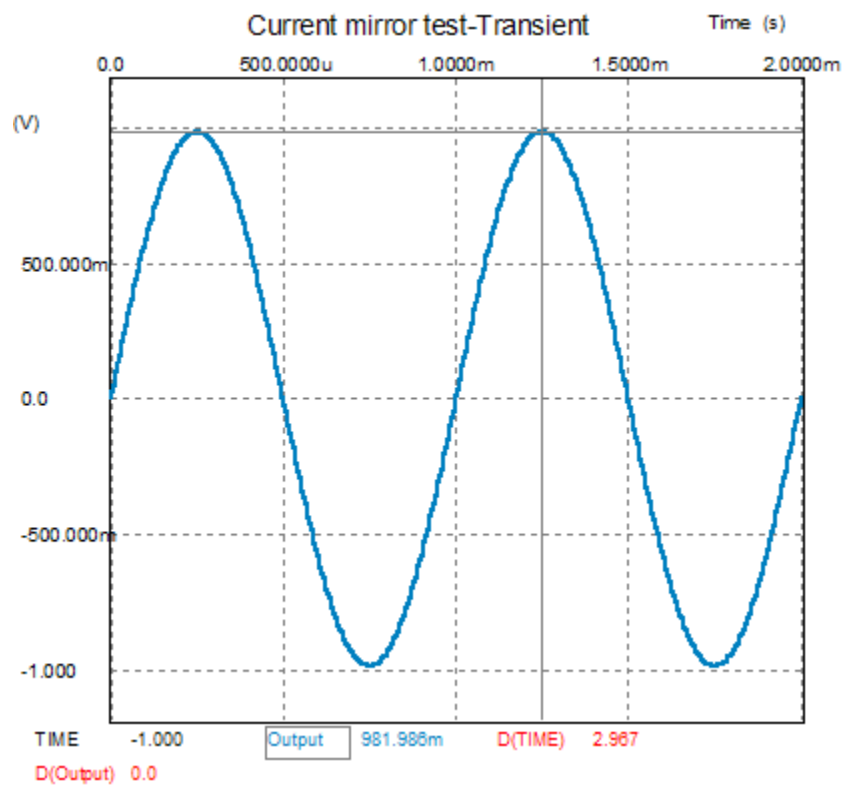


04 January 2005

### Reflections on perfect reflections

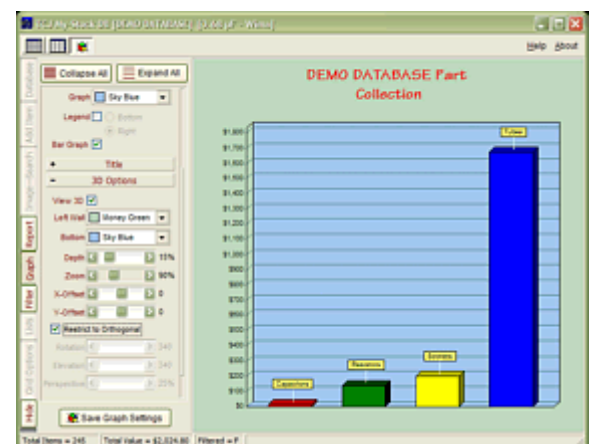
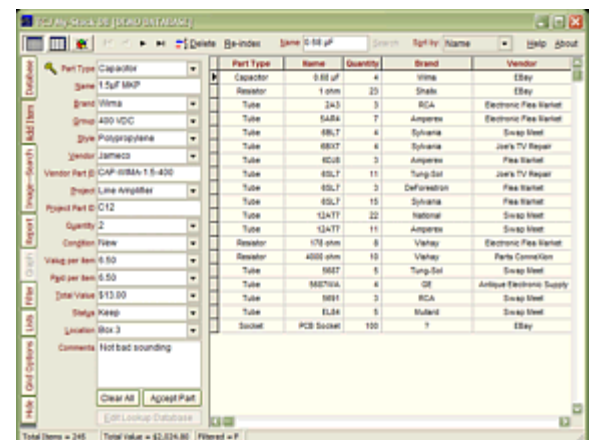
In the post script to the last blog, "Perfect Amplifier and Perfect Reflections," I gave a closer approximation to a complete formula for calculating the reflected plate resistor. Much is still missing, as the transistor-based current mirror entails its own set of formulas. As a quick quasi-reality check, I ran a SPICE simulation on just the current mirror, and then, a check on the entire circuit.

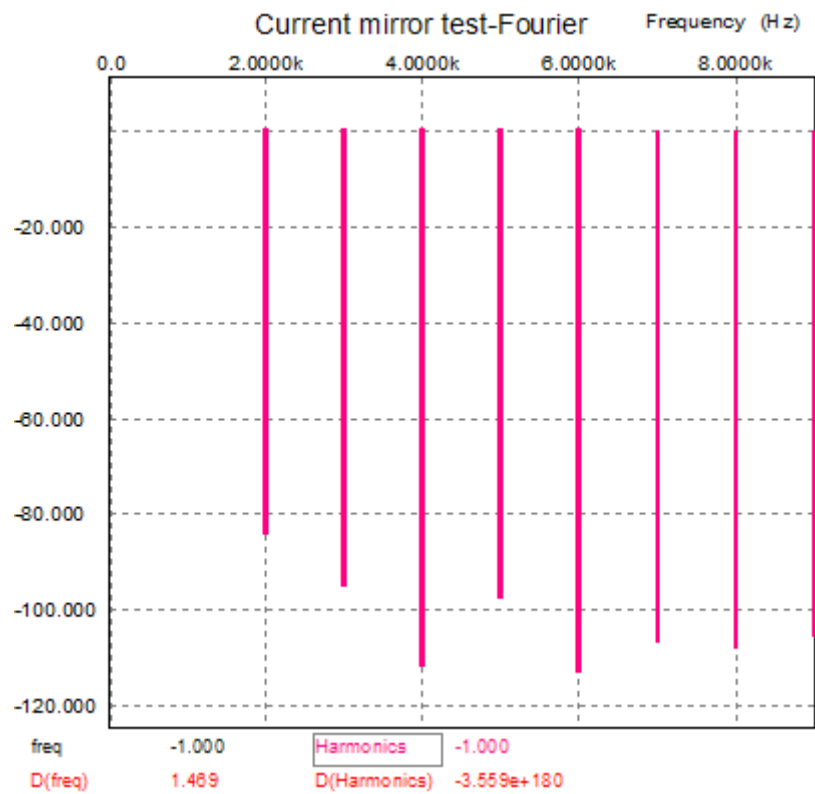
The results were interesting. First of all, a current mirror based on the MJE350 (or any other transistor) does not perfectly mirror the current flowing into it, but it comes close. With the 200-ohm emitter resistors, 98% of the current is mirrored. For example, if 1mA of varying current goes in, 0.98mA of varying current comes out. The distortion with a 0.1mA varying current signal (equals 0.98 volts across the 10k resistor) is about 0.01%.



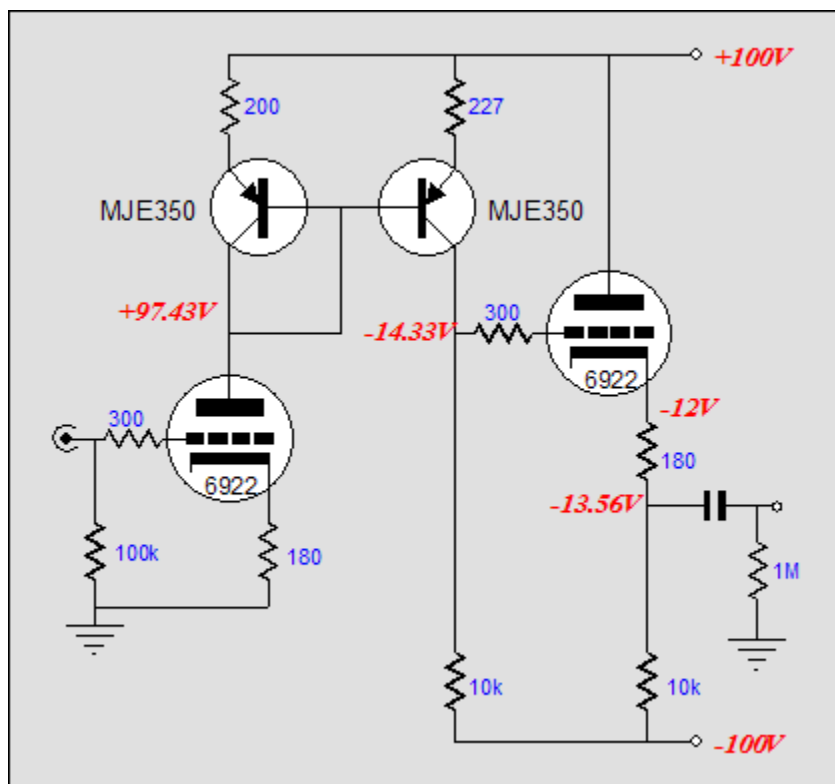
Only \$19.95  
to keep track of your  
tube and part collection

### TCJ My-Stock DB

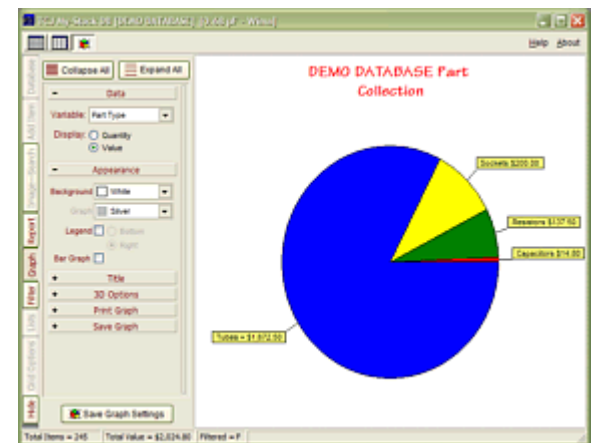




When using a transistor-based current mirror, I always match the transistors, believing it critical, besides my VOM holds a hfe test, which makes the matching painless. Well, using unmatched transistors, with one having twice the beta as the other, only slightly increased the distortion and reduced the current mirroring efficiency by less than one percent, so maybe I have been overly nervous.



The entire amplifier (using 6922s and some tweaking) performs fairly well in simulation (real results may—and invariably do—vary).



Part Type	Name	Quantity	Brand	Vendor
Tube	2A3	3	RCA	Electronic First
Tube	6BL7	4	Sylvania	Swamp Me
Tube	6BL7	4	Sylvania	Jerry's Tr's
Tube	6BL7	11	Tung-Sol	Jerry's Tr's
Tube	6BL7	3	Defusion	Flaw Mark
Tube	6BL7	10	Sylvania	Flaw Mark
Tube	12AT7	23	National	Swamp Me
Tube	5887	5	Tung-Sol	Swamp Me
Tube	58870A	4	GE	Antique Electron
Tube	5891	3	RCA	Swamp Me
Tube	6L34	5	Mullard	Swamp Me

TCJ My-Stock DB helps you know just what you have, what it looks like, where it is, what it will be used for, and what it's worth. TCJ My-Stock DB helps you to keep track of your heap of electronic parts. More details.

## Version 2 Improvements

- List all of your parts in one DB.
- Add part Images.
- One-click web searches for information.
- Vertical and horizontal grids.\*
- Create reports as PDFs.\*
- Graphs added 2D/3D: pie & bar.\*
- More powerful DB search.
- Help system added.
- Editable drop-down lists for location, projects, brands, styles, vendors and more.

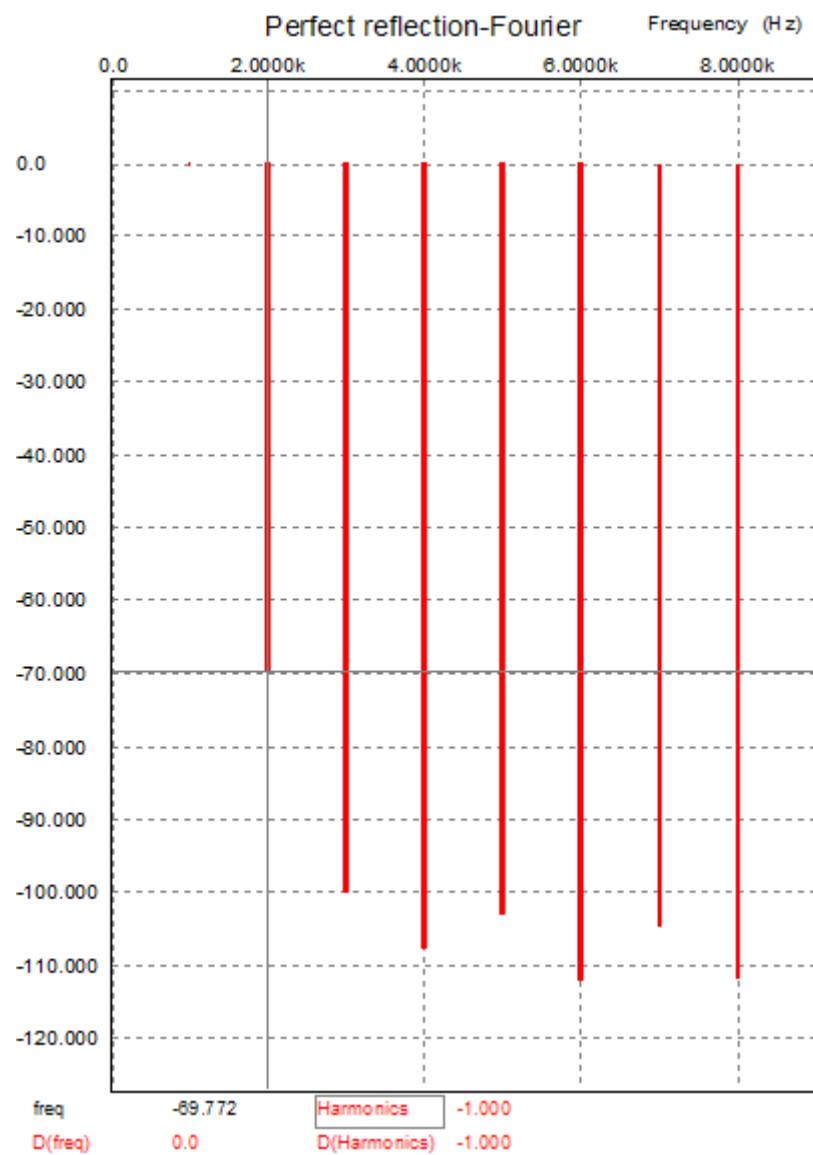
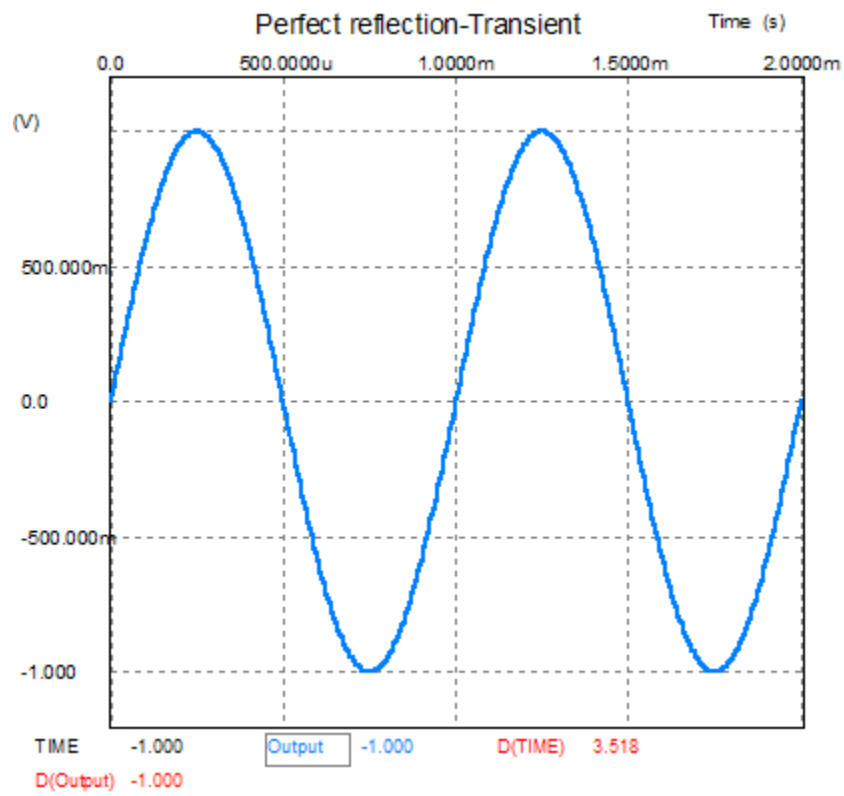
\*User definable

**Download or CD ROM  
Windows 95/98/Me/NT/2000/XP**

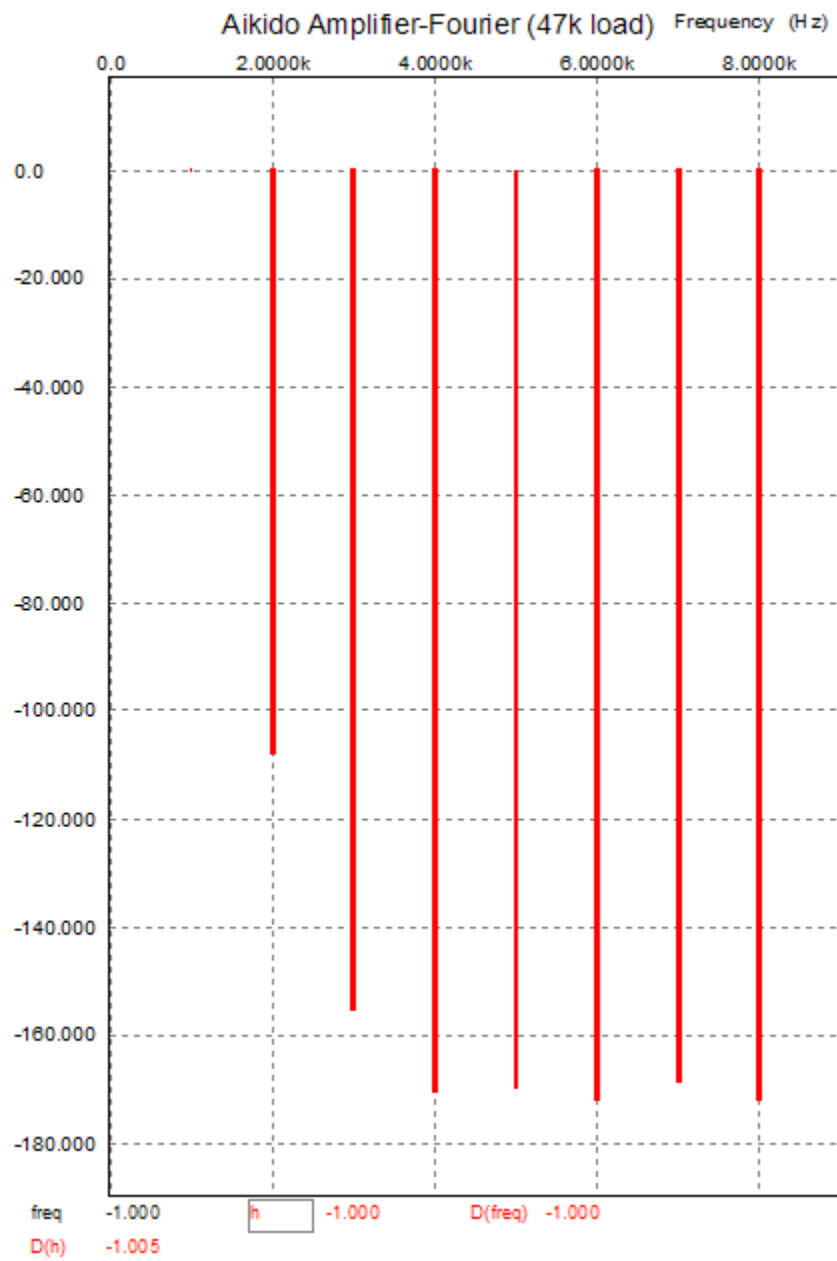
For more information, please visit our  
Web site :

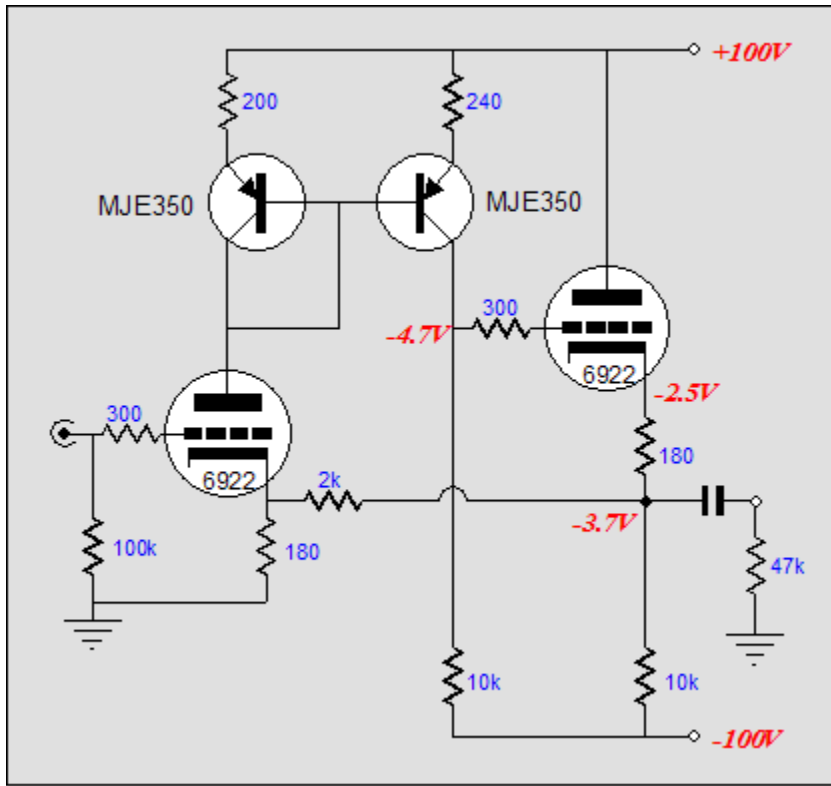
[www.glass-ware.com](http://www.glass-ware.com)

To purchase , please visit our Yahoo Store:  
<http://store.yahoo.com/glass-ware>

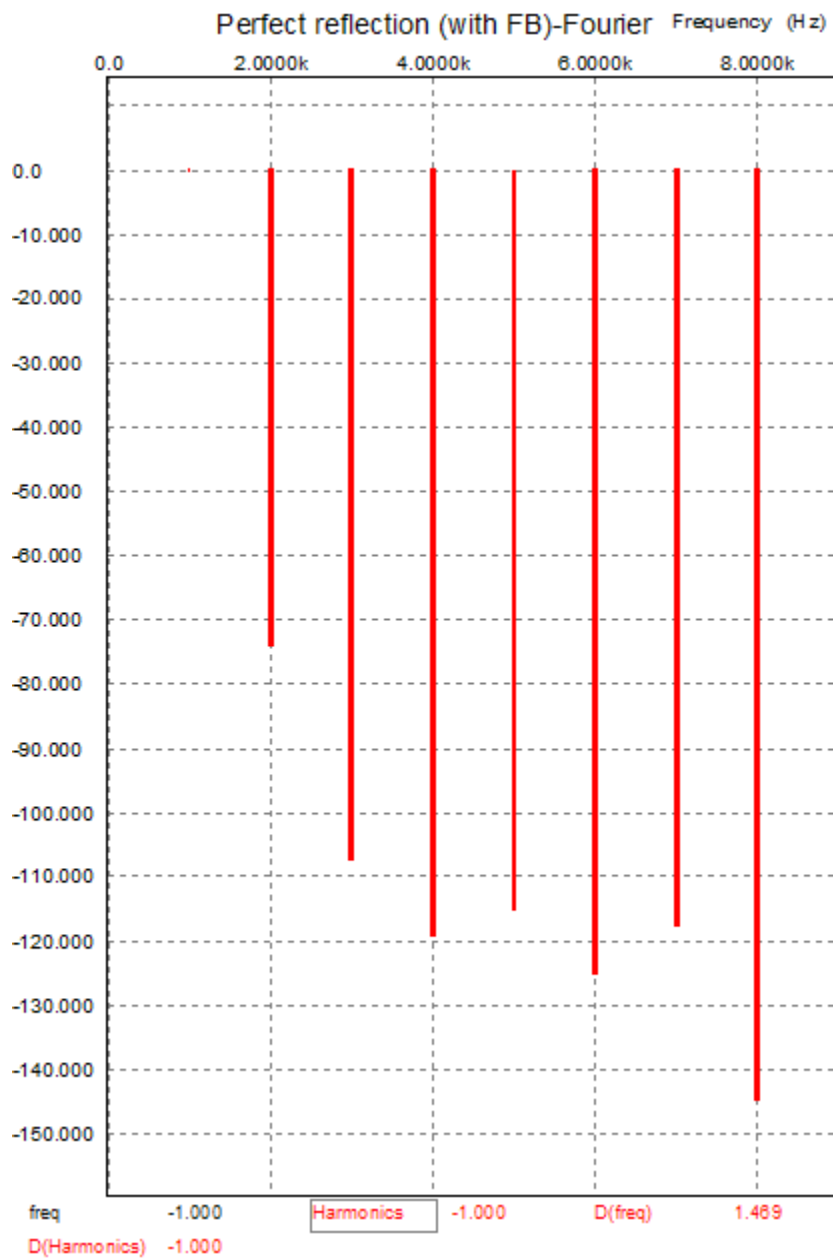


The PSRR figure is an impressive -50dB and the gain is a high 28 (+29dB). Compare the graph above with the Aikido amplifier's Fourier graph.





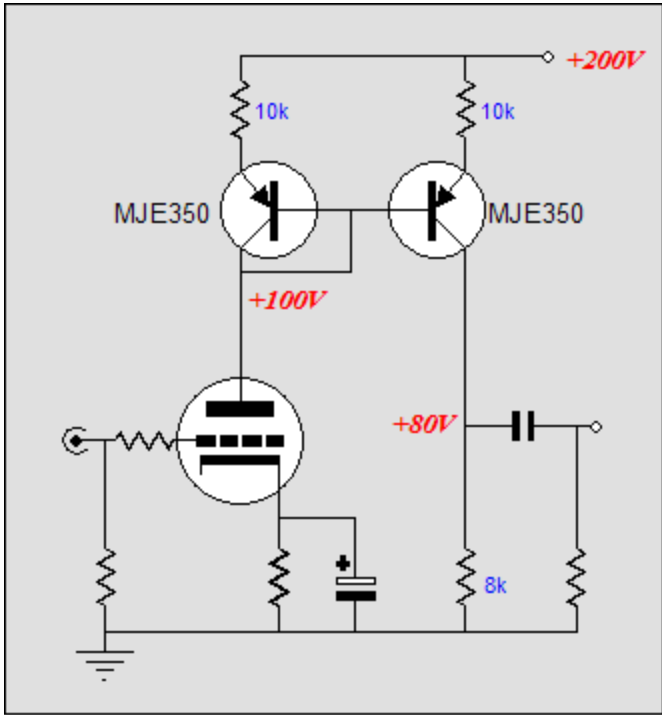
Since the output is in phase with the input, and since the amplifier puts out so much gain, a feedback loop is easily added and needed to bring down the gain to 8, which equals +18 dB (this more than enough, as +6 to +12 dB of gain is all that most line stages need).



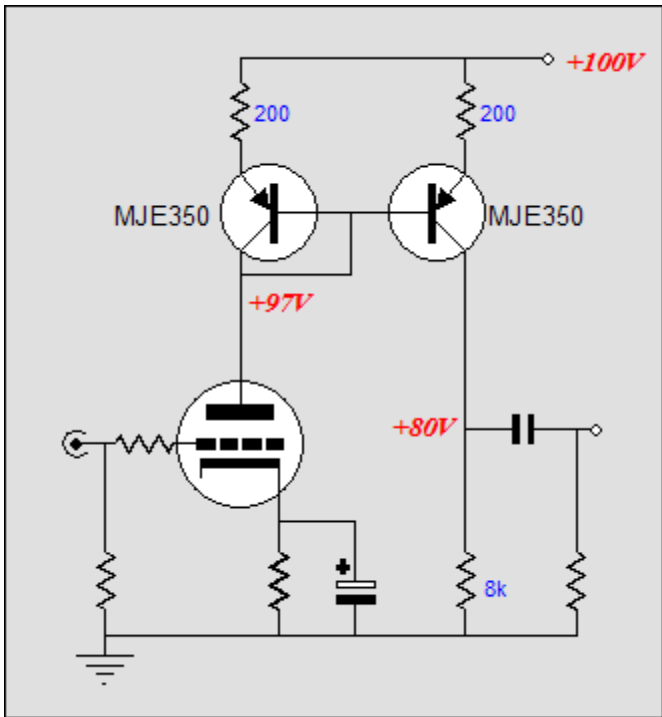
Good enough for most, but the Aikido amplifier's low distortion is haunting.

### Cascoded current mirror

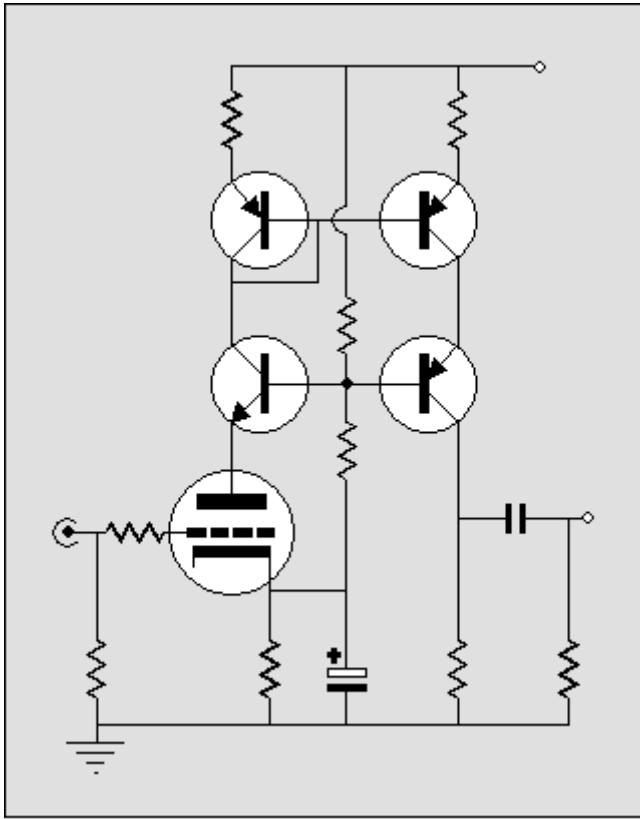
Loading a tube with a current mirror effectively creates a cascode amplifier, in that the plate undergoes little current voltage, although the current may vary wildly. However, this is only true when the current mirror's emitter resistors are low in value. For example, with 10k emitter resistors, the plate will swing large voltages that will reintroduce the Miller-Effect capacitance and greatly reduce the gain.



On the other hand, when the emitter resistors are low in value relative to the triode's  $r_p$ , say 100-200 ohms, then the Miller-Effect capacitance disappears and the gain climbs close to  $g_m R_a$ .

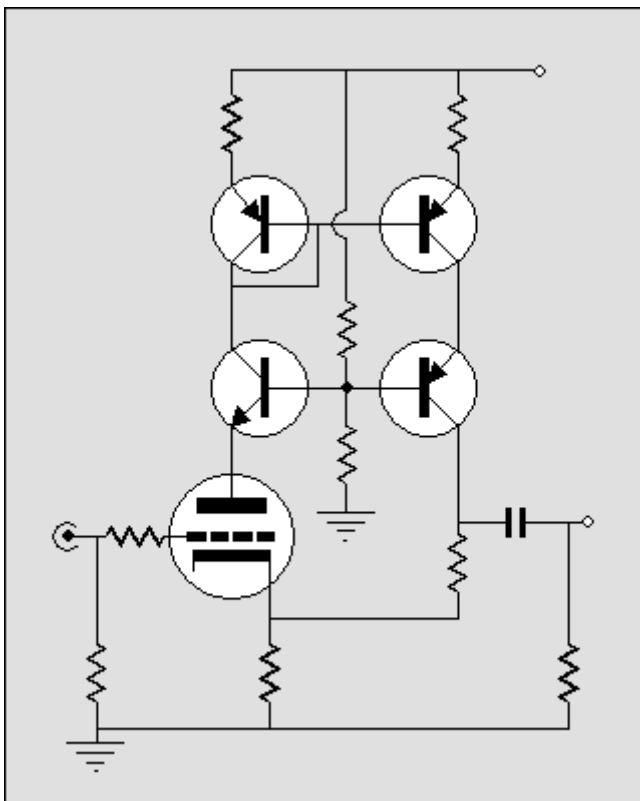


Now the question is What if we cascode the current mirror?



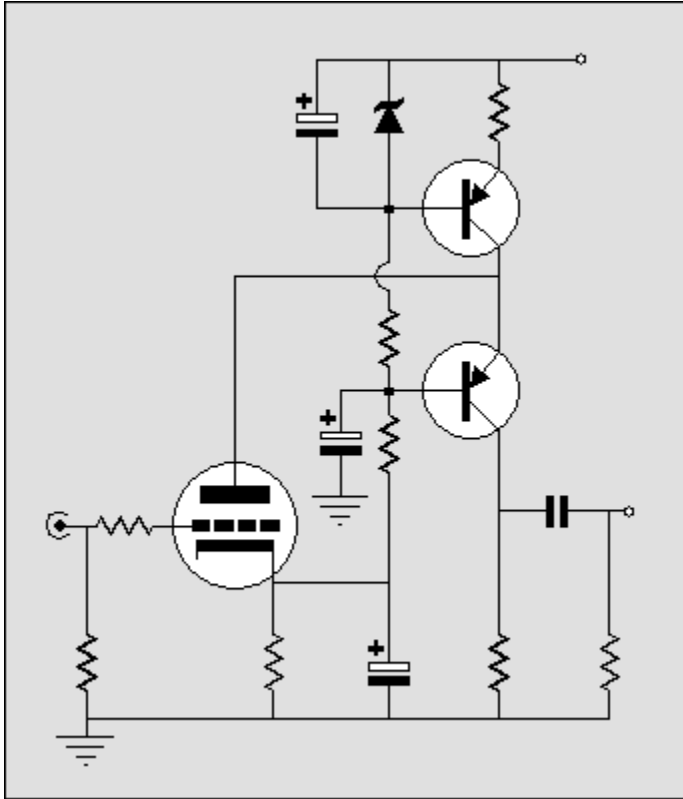
One advantage that immediately comes to mind is that we can now use low-noise, low-voltage transistors in the current mirror portion of the circuit. Second, we could use multiple PNP transistors in series to allow even high voltages to be used. Last, the cascoding would greatly improve the PSRR figure when used with a monopolar power supply, as the triode would not see any of the B+ noise on its plate.

Since this topology does not invert the phase of the input signal, we can use the cathode as a negative input for applying feedback.





Still, the problem this topology faces is that it does not improve upon a grounded-cathode amplifier's PSRR. Inverting the cascode and adding a constant-current source will take care of the PSRR troubles, as the B+ noise cannot make across the constant-current source.



A truly low-noise cascode offers some real advantages for preamps and line amplifiers. One use for this circuit that comes to mind is that of an input stage in a single-ended amplifier.







[< Back](#)

www.tubecad.com

Copyright © 1999-2004 GlassWare

All Rights Reserved

[Next >](#)