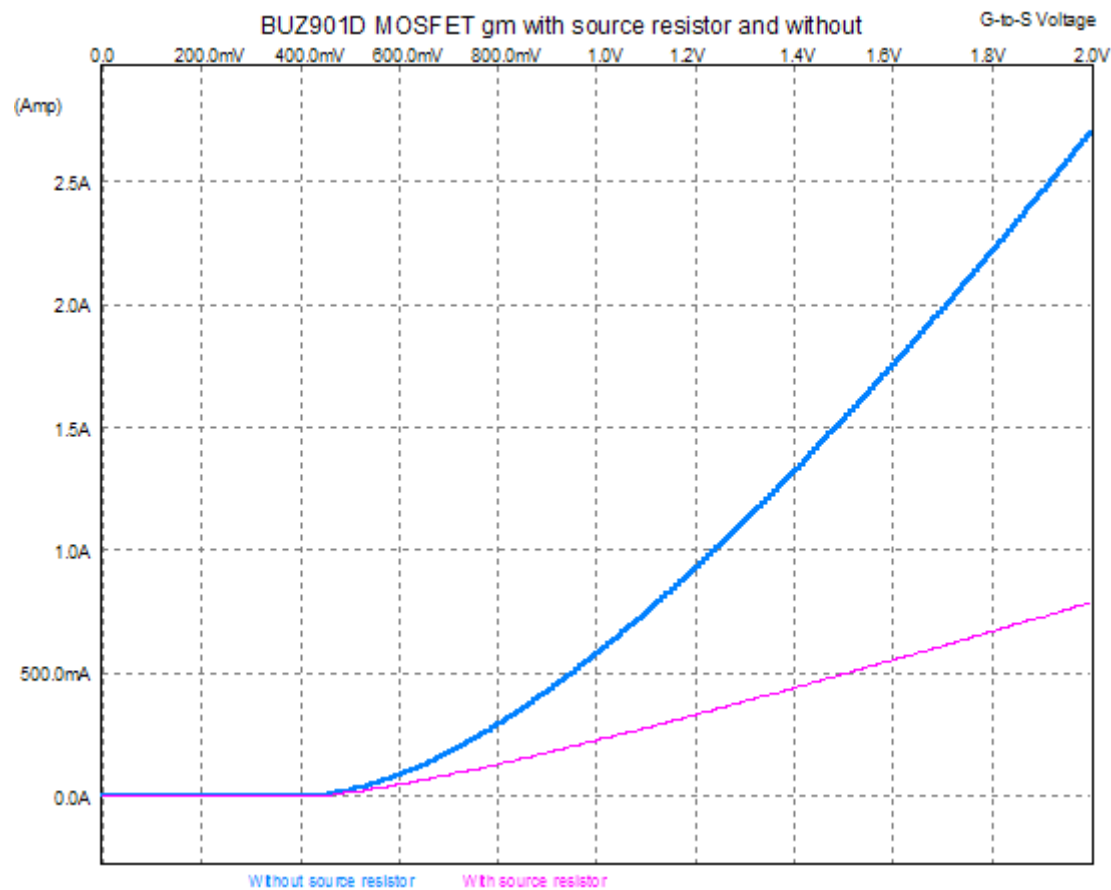


$$A = -\mu R_a / [R_a + r_p + (\mu + 1)R_k]$$

If this signal at the cathode exactly equaled the input signal in all but amplitude, then the distortion would vanish from the plate, as the tube would have to have produced zero distortion to create such equality. Real tubes do distort and that distortion is present on the unbypassed cathode resistor. This distortion is in voltage anti-phase with the input signal. For example, if the cathode voltage is too low compared to the grid's voltage, the tube will increase its conduction, which will lift the cathode voltage. On the other hand, if the cathode voltage is too high compared to the grid's voltage, the tube will decrease its conduction, which will drop the cathode voltage. In other words, feedback. The larger the cathode resistor's value, the more feedback.

Below is a graph of a power MOSFET with and without a source resistor (1 ohm). Note how much transconductance (gm) was lost (hold a ruler to the screen) and how much more linear the transfer curve is. The unbypassed resistor produced a good amount of feedback, but at the cost of gm.



The formula for the decrease in a MOSFET's gm because of an unbypassed source resistor is:

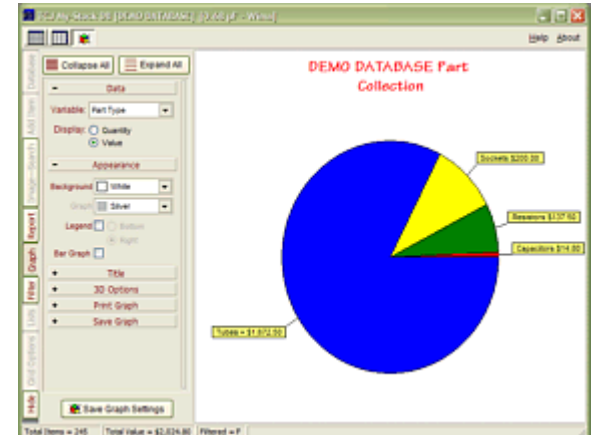
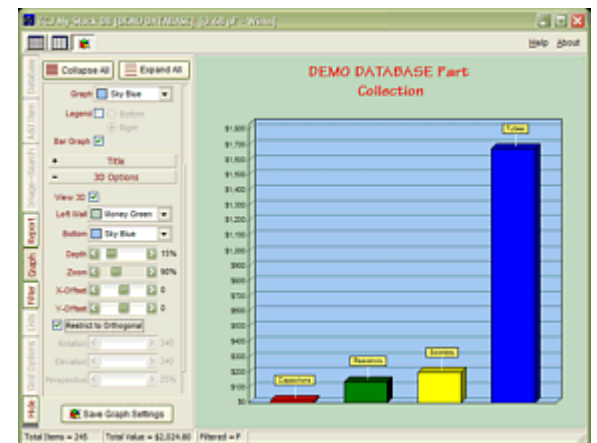
$$gm' = gm / (1 + gmR_s)$$

A triode's decrease in gm because of an unbypassed cathode resistor is:

$$gm' = \mu / (r_p + [\mu + 1]R_k)$$

Wait a minute

You mean to tell me that the greatest minds (and ears) in tube world voted for the circuit with the most feedback? It is almost as if country-western singers were polled and the result was that most found sobriety preferable to



Part Type	Name	Quantity	Brand	Vendor
Tube	2A3	3	RCA	Electronic Parts
Tube	6SL7	4	Sylvania	Swag Me
Tube	6812	4	Sylvania	John's TV &
Tube	6SL7	11	Tung-Sol	John's TV &
Tube	6SL7	3	Deflection	Free Mart
Tube	6SL7	18	Sylvania	Free Mart
Tube	12AT7	22	National	Swag Me
Tube	5687	6	Tung-Sol	Swag Me
Tube	6BD6A	4	GE	Antique Electron
Tube	5891	3	RCA	Swag Me
Tube	6L84	5	Mullard	Swag Me

TCJ My-Stock DB helps you know just what you have, what it looks like, where it is, what it will be used for, and what it's worth. TCJ My-Stock DB helps you to keep track of your heap of electronic parts. More details.

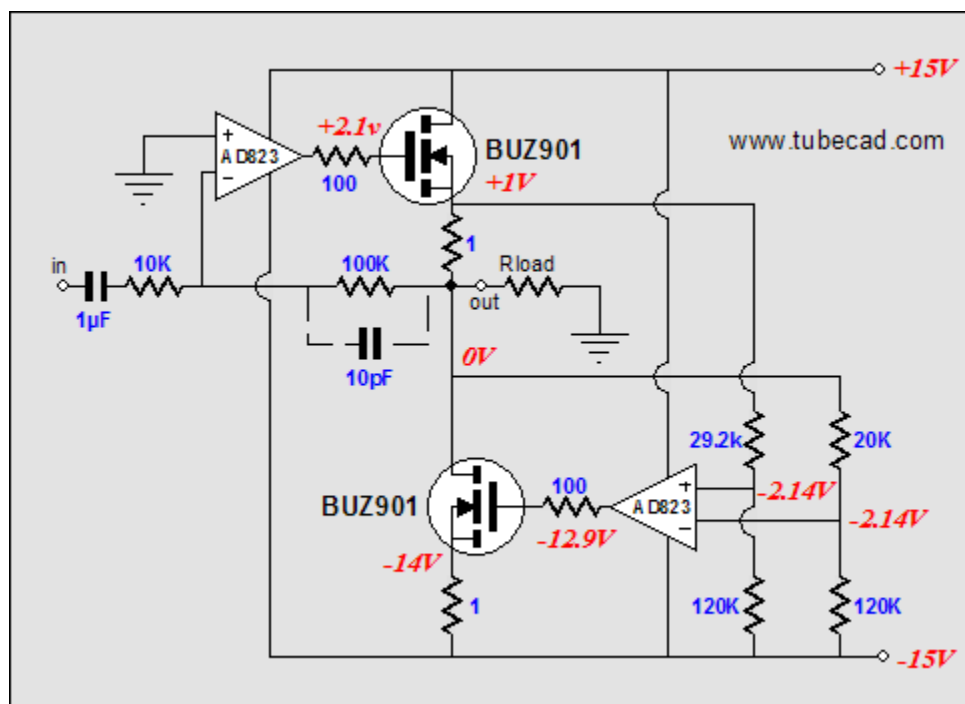
Version 2 Improvements

- List all of your parts in one DB.
- Add part Images.
- One-click web searches for information.
- Vertical and horizontal grids.*
- Create reports as PDFs.*
- Graphs added 2D/3D: pie & bar.*
- More powerful DB search.
- Help system added.
- Editable drop-down lists for location, projects, brands, styles, vendors and more.

*User definable

drunkenness. Why the surprise? The only problem with distortion is that it deforms the signal, sullyng purity and mucking clarity.

Returning to the Macaulay circuit, if we move the sense resistor from the top device's collector/drain/plate to its emitter/source/cathode, what would result? Well, the output device's transconductance would decrease along with its nonlinearity, so the OpAmp will have to swing slightly more output voltage to compensate, which in the solid-state version is not that big a liability. Additionally, the top output device is better protected from a shorted output, as the 1-ohm resistor limits the maximum current flow through the device. Most importantly, the top and bottom output devices' transfer curves would match each other. Below is the revised circuit:



In brief, the transistors have been swapped out with MOSFETs; the idle current is now a healthy 1A; the AD823 OpAmp works particularly well in this application, as it can swing to within 0.5V of its rail voltages; the input coupling capacitor both limits the low-frequency amplification and allows full DC feedback to maintain a low DC offset at the output (yes, the amplifier inverts the phase, but the loudspeaker leads can be reversed); the amplifier can be rewired for no phase inversion, but the capacitor cannot be eliminated, as it is needed to prevent high DC offsets at the output.

All in all a good little amplifier, perfect for annoying audiophiles who like to spend lots more money. It only puts out 7 watts, but then many 300B SE amplifiers only put out 7 watts. Of course, the 300B is likely to sound more powerful than this amplifier, as its clipping can never be as sharp as this amplifier's, as a transformer-based amplifier can never accept as much negative feedback because of the phase shifts through the transformer.

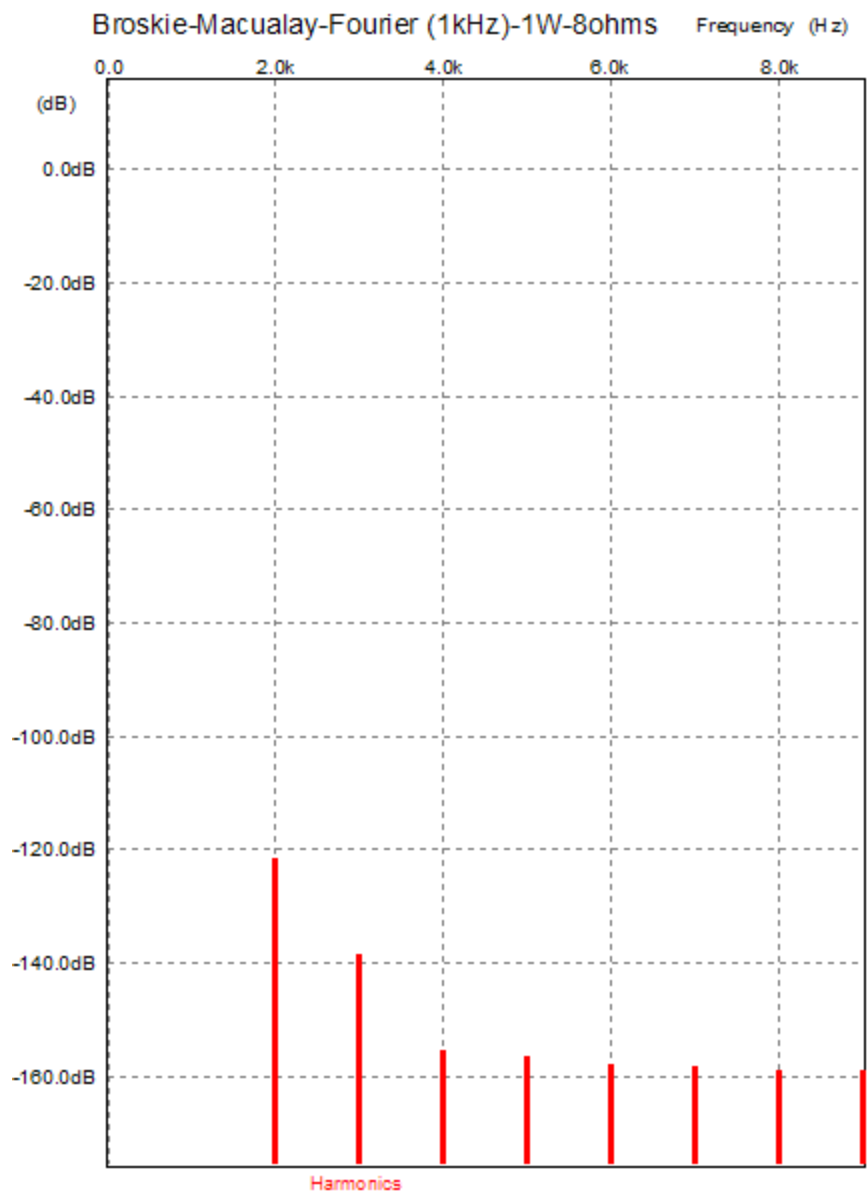
Still, if I owned a \$3,000 300B amplifier I would be afraid to put it up against this amplifier, as its distortion products have a distinct single-ended quality to them, as shown below. Note the second and third are about all there is and note how low they are relative to the fundamental. If reality were only half as good as these SPICE simulation, we would still have an excellent amplifier.

**Download or CD ROM
Windows 95/98/Me/NT/2000/XP**

For more information, please visit:

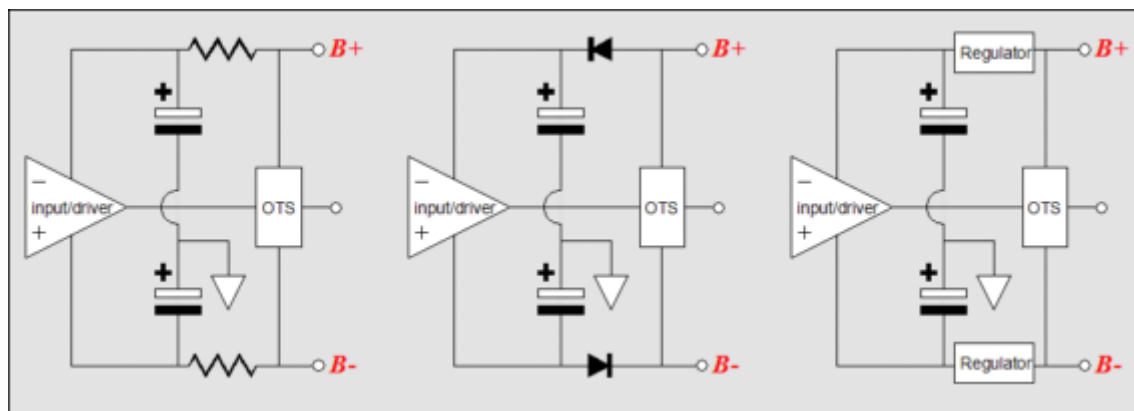
www.glass-ware.com

To purchase , please visit our Yahoo Store:
<http://store.yahoo.com/glass-ware>

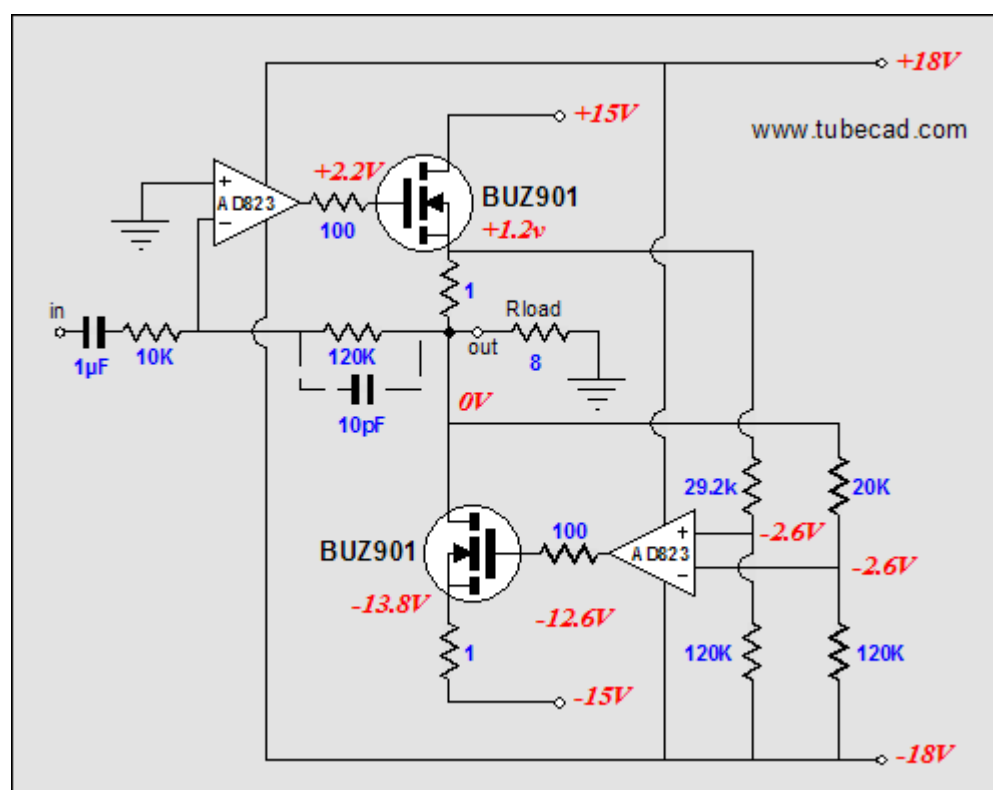
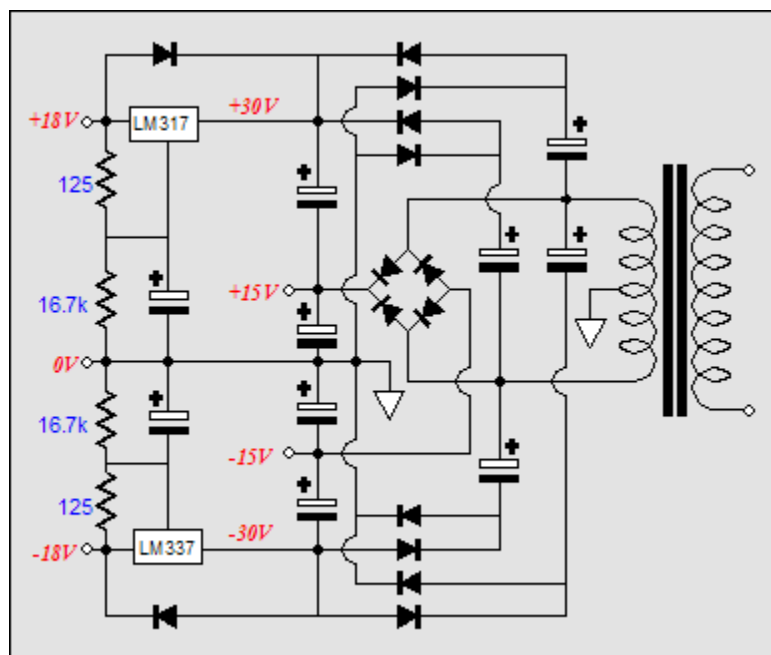


Further enhancements

I cannot let a schematic sit five minutes before wanting to improve it. In this case, the power supply is probably the weakest link, as it is not regulated. Regulating the power supply is one possibility, but an easier, less expensive tact is to regulate only the OpAmp's power supply. However, we cannot afford to lose a precious volt of output swing from the OpAmps and cascading a regulator from the existing power supply will lose at least 3-volts potential swing, because of the voltage drop across the regulator.



This is a problem all follower-based output stages face: the driver circuit needs to work with a greater B+ voltage than the output stage, as it must swing a greater output-voltage swing than the output stage, particularly with a MOSFET output stage. Yet, most designers are loath to add a second power transformer. Instead, they will add a series resistor and decoupling capacitor and hope that too much voltage isn't lost; or, they may only place a rectifier in series with the existing power supply, so that when the output stage force the rail voltage to collapse, the driver stage and input stage's power supply capacitors will not discharge into the main power supply. The better solution is to add full-wave voltage doublers to each rail, creating new rail at twice the power supply's nominal voltage. These new rails can then be passively or actively smoothed. Below is a such a voltage-doubled power supply circuit.



7 watts?

Why not build a 30 or 100 watt version? Theoretically such an amplifier is possible, but finding suitable OpAmps to drive it is challenging. In spite of there being thousands of OpAmps, only a few sound all that good and very few can handle 50-volt rails, which a 100W amplifier would require. I know that Apex make high-voltage OpAmps, but I have no practical experience with them. If you have a suggested OpAmp, please send it in.

//JRB

[< Back](#)

www.tubecad.com

Copyright © 1999-2005 GlassWare

All Rights Reserved

[Next >](#)